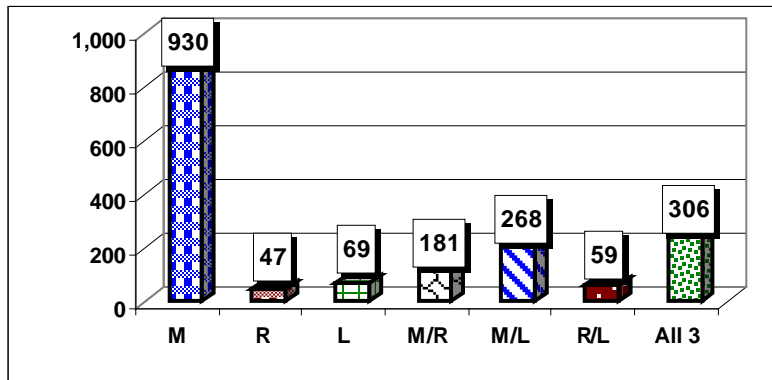




**Florida Community College at Jacksonville  
Cohort VI – Tracking Report  
July, 2008**

**COHORT VI Fall 2006 - Community Identification**

In the beginning of Fall 2006, 2,842 First-time-in-College (FTIC) students entered Florida Community College at Jacksonville. Of the FTIC students, 2,774 students (98%) had indicated they were seeking a credit credential (degree or certificate) at FCCJ. Of the FTIC credit credential seeking students, 1,860 students (67%) were placed into some type of remediation. These students were segmented by their remediation placement: 50%-math, 3%-reading, 4%-language, 10%-math/reading, 14%-math/language, 3%-reading/language, and 16%-all three areas.



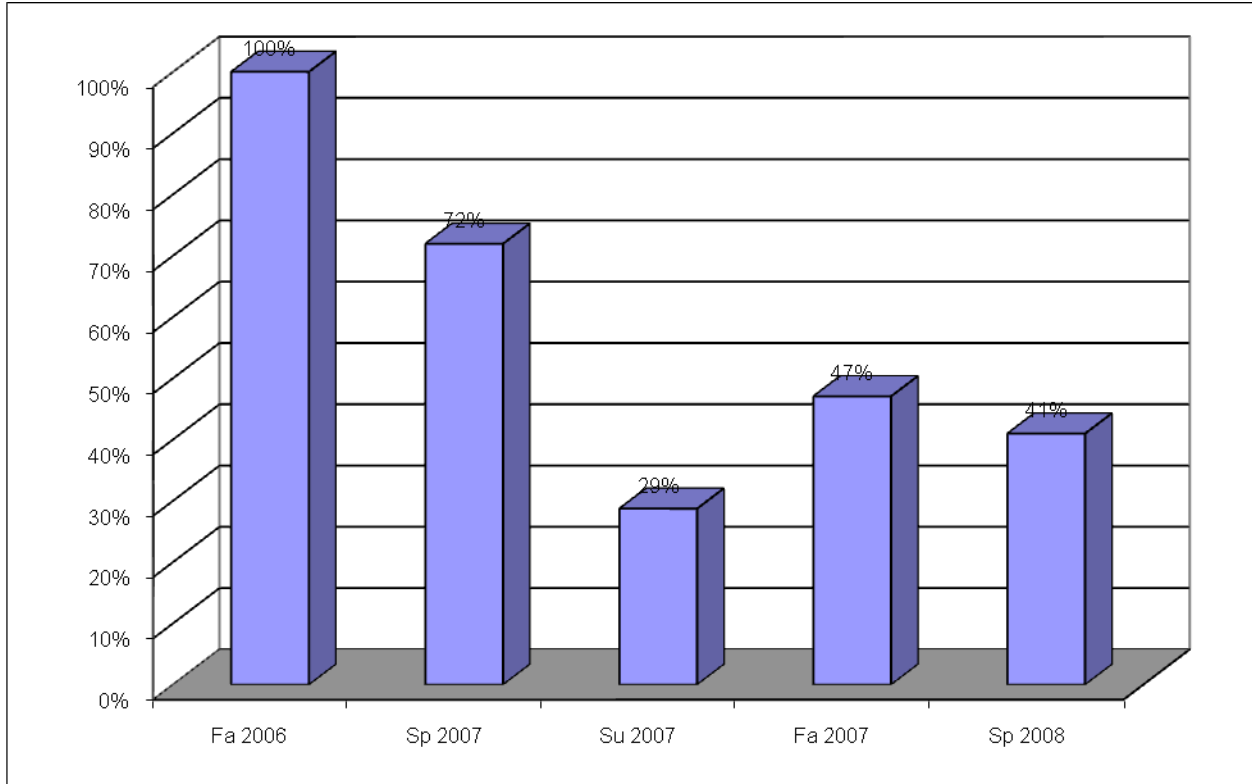
QEP Community	Community Total	Percentage of Total
Math	930	50%
Read	47	3%
Language	69	4%
M/R	181	10%
M/L	268	14%
R/L	59	3%
All	306	16%
Total	1860	100%



**Florida Community College at Jacksonville  
Cohort VI – Tracking Report  
July, 2008**

**COHORT VI Fall 2006 – Retention—All Terms**

The students in the 2006 Fall cohort were tracked to determine if the student was enrolled at the college in following terms. As of Spring 2008, 41% of the cohort was enrolled.



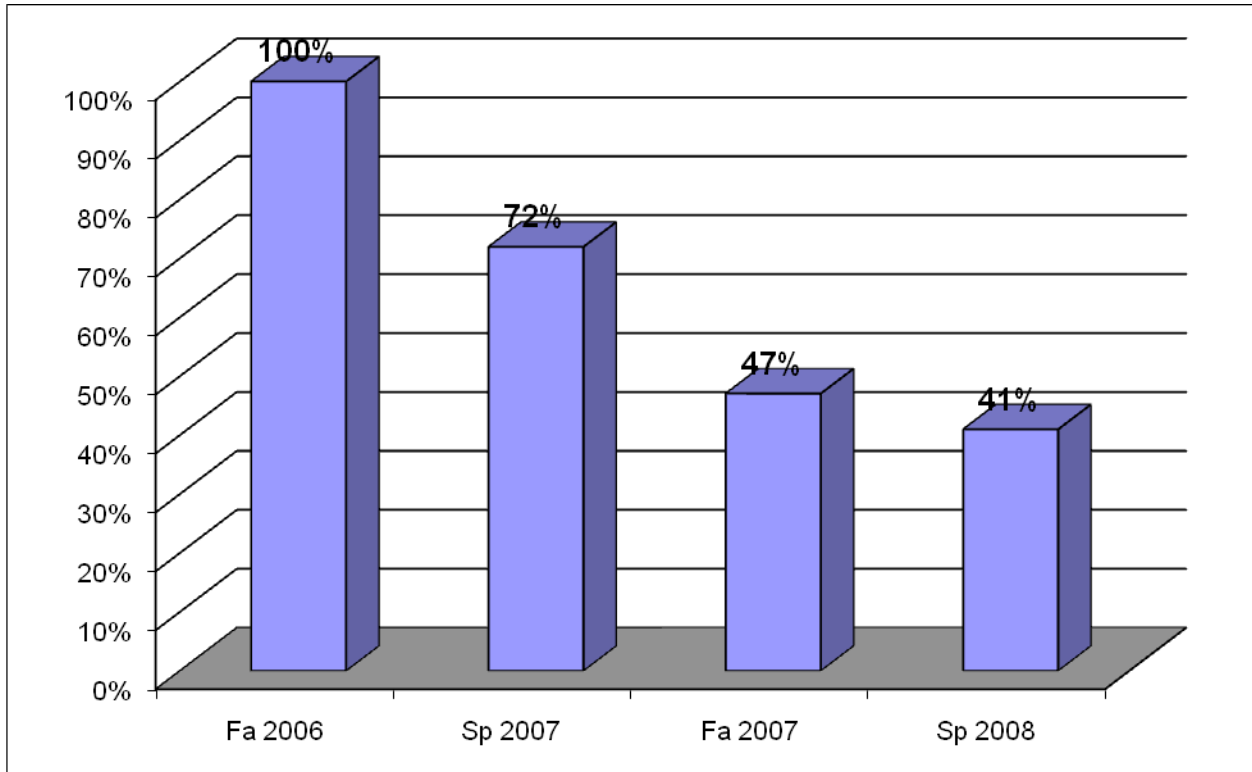
Term	Math		Reading		Language		Math/ Reading		Math/ Language		Reading/ Language		All 3		Total	
	N	%	N	%	N	%	N	%	N	%	N	%	N	%	N	%
Fa 2006	930	100%	47	100%	69	100%	181	100%	268	100%	59	100%	306	100%	1,860	100%
Sp 2007	681	73%	33	70%	52	75%	125	69%	186	69%	40	68%	221	72%	1,338	72%
Su 2007	282	30%	14	30%	20	29%	50	28%	69	26%	21	36%	78	25%	534	29%
Fa 2007	459	49%	24	51%	41	59%	78	43%	123	46%	28	47%	122	40%	875	47%
Sp 2008	407	44%	21	45%	31	45%	72	40%	99	37%	25	42%	107	35%	762	41%



**Florida Community College at Jacksonville  
Cohort VI – Tracking Report  
July, 2008**

**COHORT VI Fall 2006 – Retention—Excluding Summers**

Since summer enrollment is lower than the Fall and Spring enrollments, summer term is removed from these charts to review the pattern of retention for the 2006 Cohort and each community.



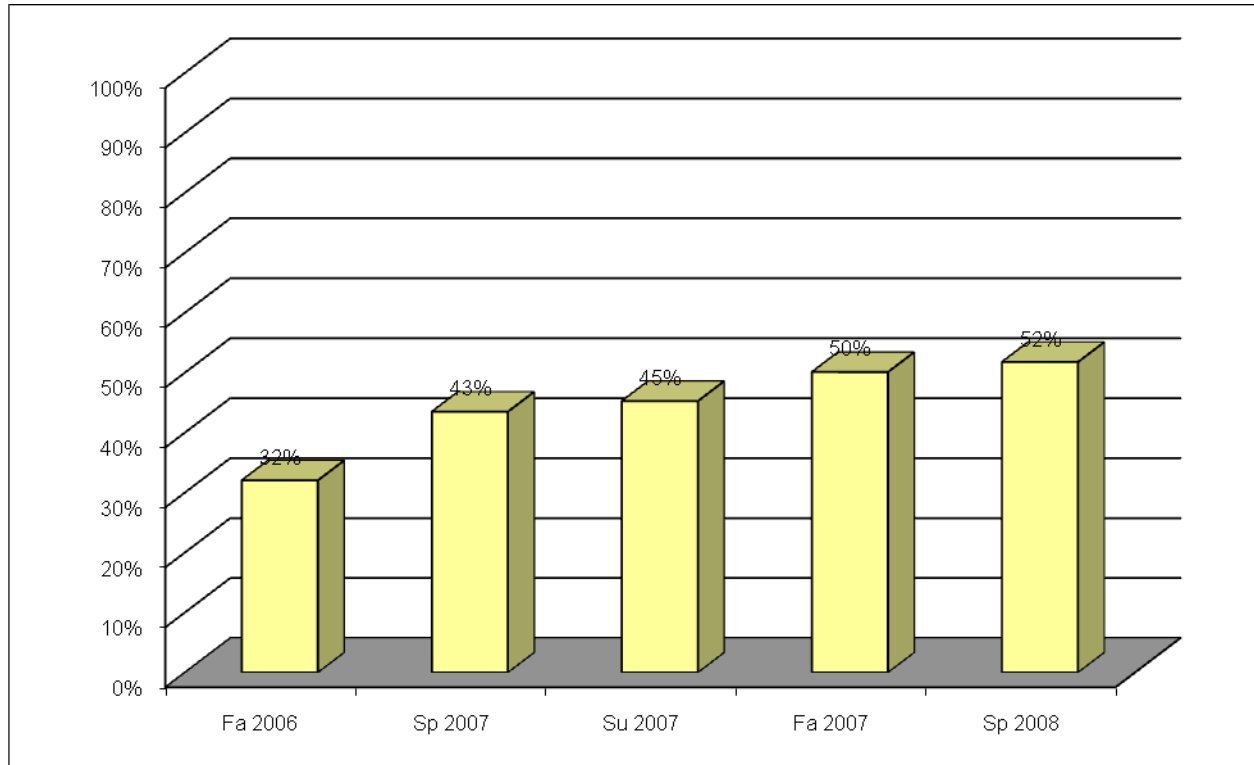
Term	Math		Reading		Language		Math/ Reading		Math/ Language		Reading/ Language		All 3		Total	
	N	%	N	%	N	%	N	%	N	%	N	%	N	%	N	%
Fa 2006	930	100%	47	100%	69	100%	181	100%	268	100%	59	100%	306	100%	1,860	100%
Sp 2007	681	73%	33	70%	52	75%	125	69%	186	69%	40	68%	221	72%	1,338	72%
Fa 2007	459	49%	24	51%	41	59%	78	43%	123	46%	28	47%	122	40%	875	47%
Sp 2008	407	44%	21	45%	31	45%	72	40%	99	37%	25	42%	107	35%	762	41%



**Florida Community College at Jacksonville  
Cohort VI – Tracking Report  
July, 2008**

**COHORT VI Fall 2006 – College Preparatory Passing Rate**

The students in the 2006 Fall cohort were tracked to determine if the student had passed all required college preparatory coursework at the college. By Spring 2008, 52% had completed requirements.



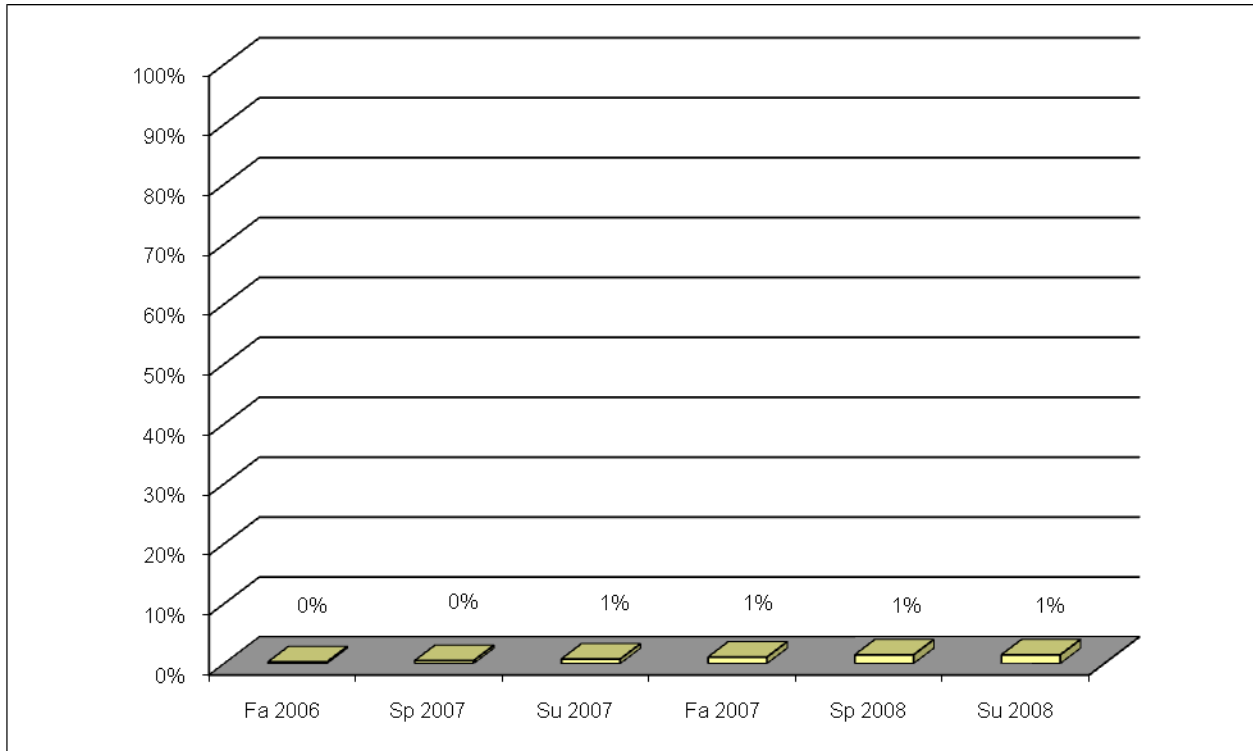
Term	Math		Reading		Language		Math/ Reading		Math/ Language		Reading/ Language		All 3		Total		Cumulative Total	
	N	%	N	%	N	%	N	%	N	%	N	%	N	%	N	%	N	%
Fa 2006	403	43%	25	53%	44	64%	25	14%	63	24%	15	25%	21	7%	596	32%	596	32%
Sp 2007	92	10%	5	11%	7	10%	38	21%	32	12%	11	19%	28	9%	213	11%	809	43%
Su 2007	16	4%	0	0%	2	1%	8	7%	1	1%	2	1%	4	2%	33	2%	842	45%
Fa 2007	40	9%	2	1%	2	1%	10	8%	13	11%	3	1%	20	8%	90	6%	932	50%
Sp 2008	16	4%	0	0%	0	0%	2	2%	4	3%	0	0%	9	4%	31	2%	963	52%
<b>Total</b>	<b>567</b>	<b>61%</b>	<b>32</b>	<b>68%</b>	<b>55</b>	<b>80%</b>	<b>83</b>	<b>46%</b>	<b>113</b>	<b>42%</b>	<b>31</b>	<b>53%</b>	<b>82</b>	<b>27%</b>	<b>963</b>	<b>52%</b>	<b>963</b>	<b>52%</b>



**Florida Community College at Jacksonville  
Cohort VI – Tracking Report  
July, 2008**

**COHORT VI Fall 2006 – Completion Rate—Any Degree or Certificate**

Students in the Fall 2006 cohort were tracked to determine if the student earned a degree (A.A., A.S., or A. A.S.) or certificate at the college. By Summer 2008, 27 students had earned a degree or certificate.

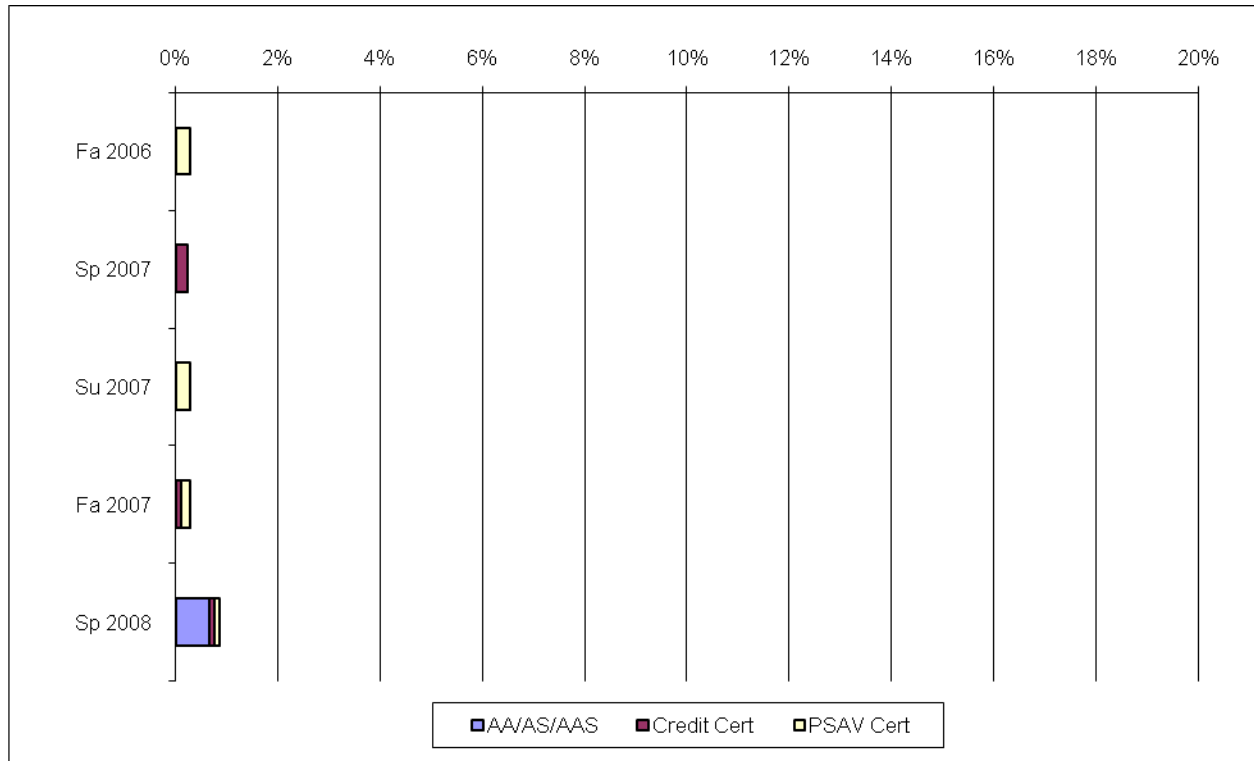


Term	Math		Reading		Language		Math/ Reading		Math/ Language		Reading/ Language		All 3		Total		Cumulative Total	
	N	%	N	%	N	%	N	%	N	%	N	%	N	%	N	%	N	Cum %
Fa 2006	1	0%	0	0%	1	1%	1	1%	0	0%	0	0%	2	1%	5	0%	5	0%
Sp 2007	3	0%	0	0%	0	0%	0	0%	1	0%	0	0%	0	0%	4	0%	9	0%
Su 2007	1	0%	0	0%	0	0%	1	1%	2	1%	0	0%	1	0%	5	0%	14	1%
Fa 2007	2	0%	0	0%	0	0%	1	1%	2	1%	0	0%	0	0%	6	0%	20	1%
Sp 2008	12	1%	1	2%	1	1%	1	1%	0	0%	1	2%	0	0%	7	0%	27	1%
Su 2008	0	0%	0	0%	0	0%	0	0%	0	0%	0	0%	0	0%	0	0%	27	1%
<b>Total</b>	<b>19</b>	<b>4%</b>	<b>1</b>	<b>1%</b>	<b>2</b>	<b>1%</b>	<b>4</b>	<b>3%</b>	<b>5</b>	<b>4%</b>	<b>1</b>	<b>0%</b>	<b>3</b>	<b>1%</b>	<b>27</b>	<b>2%</b>	<b>27</b>	<b>1%</b>



**Florida Community College at Jacksonville  
Cohort VI – Tracking Report  
July, 2008**

**COHORT VI Fall 2006 – Completion Rate—By Degree or Certificate**



Term	A.A.A.S.		Credit Certificate		PSAV Certificate		Total	
	N	Cum %	N	Cum %	N	Cum %	N	%
Fa 2006	0	0%	0	0%	5	0%	5	0%
Sp 2007	0	0%	4	0%	0	0%	4	0%
Su 2007	0	0%	0	0%	5	0%	5	0%
Fa 2007	0	0%	2	0%	3	0%	5	0%
Sp 2008	12	1%	2	0%	2	0%	16	1%
<b>Total</b>	<b>12</b>	<b>1%</b>	<b>8</b>	<b>0%</b>	<b>15</b>	<b>1%</b>	<b>35</b>	<b>2%</b>