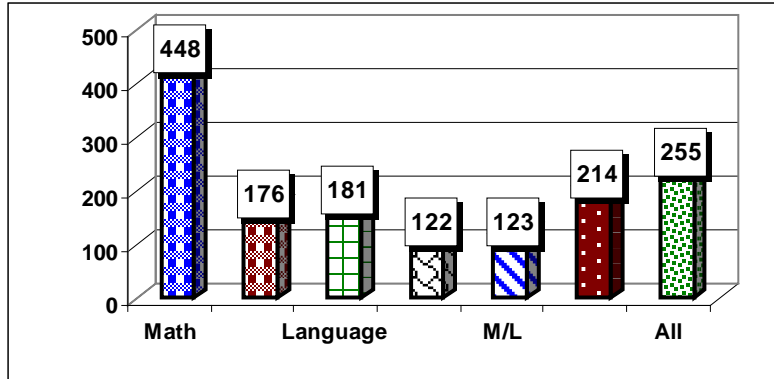




**Florida Community College at Jacksonville**  
**Cohort V – Tracking Report**  
 July, 2008

**COHORT V Fall 2005 - Community Identification**

In the beginning of Fall 2005, 3,168 First-time-in-College (FTIC) students entered Florida Community College at Jacksonville. Of the FTIC students, 3,087 students (97%) had indicated they were seeking a credit credential (degree or certificate) at FCCJ. Of the FTIC credit credential seeking students, 1,519 students (49%) were placed into some type of remediation. These students were segmented by their remediation placement: 29%-math, 12%-reading, 12%-language, 8%-math/reading, 8%-math/language, 14%-reading/language, and 17%-all three areas.



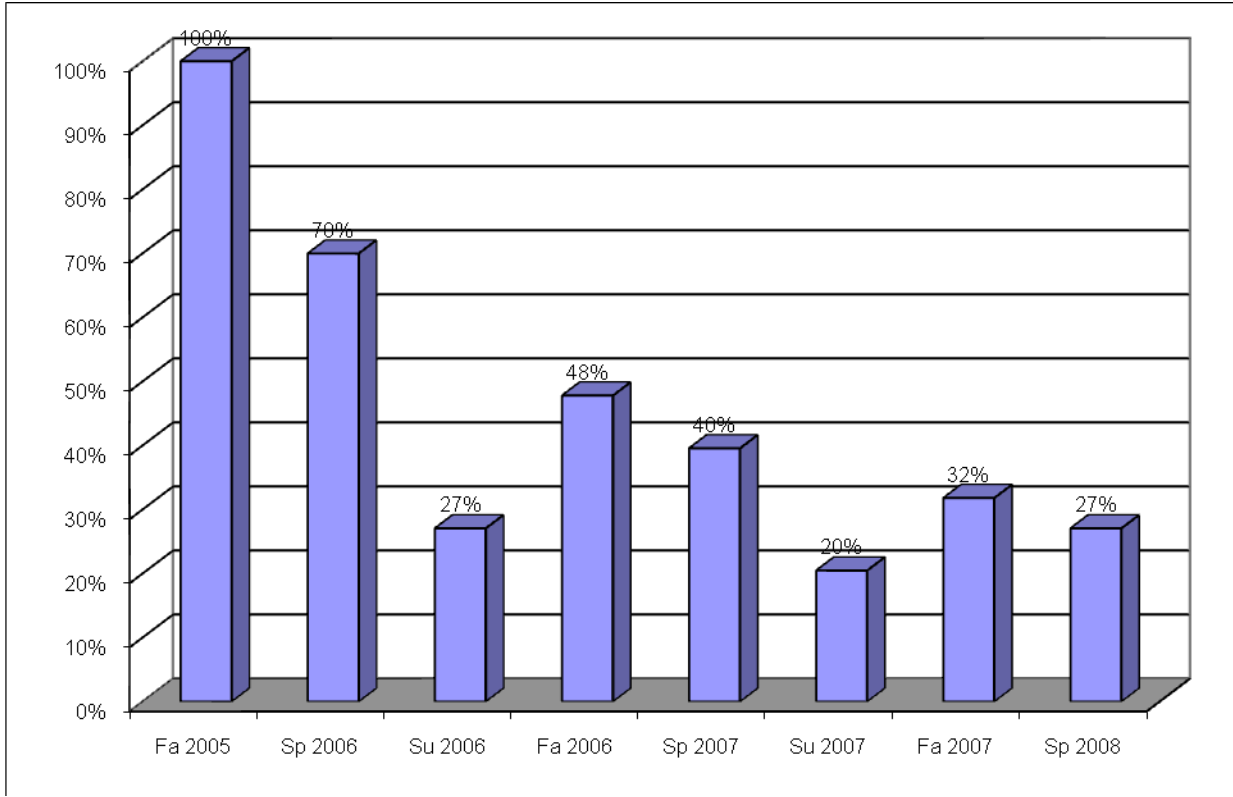
QEP Community	Community Total	Percentage of Total
Math	448	29%
Read	176	12%
Language	181	12%
M/R	122	8%
M/L	123	8%
R/L	214	14%
All	255	17%
Total	1519	100%



**Florida Community College at Jacksonville  
Cohort V – Tracking Report  
July, 2008**

**COHORT V Fall 2005 – Retention—All Terms**

The students in the 2005 Fall cohort were tracked to determine if the student was enrolled at the college in following terms. As of Spring 2008, 27% of the cohort was enrolled.



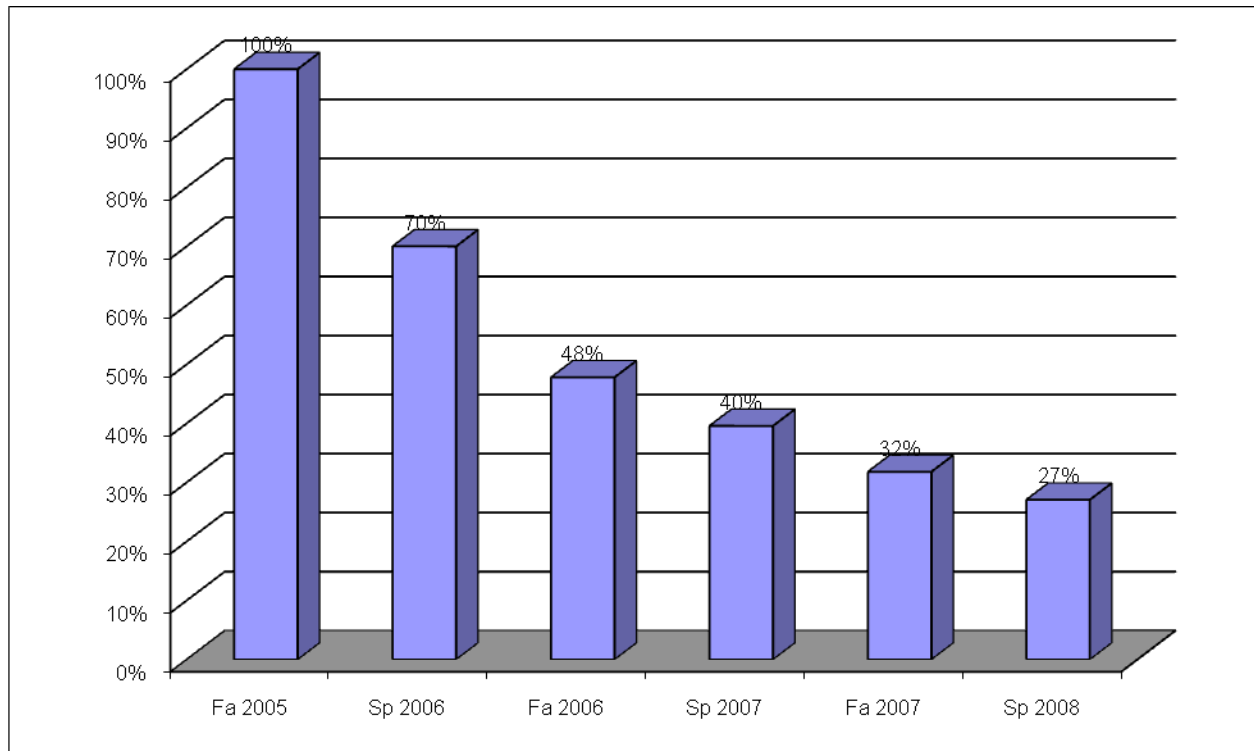
Term	Math		Reading		Language		Math/ Reading		Math/ Language		Reading/ Language		All 3		Total	
	N	%	N	%	N	%	N	%	N	%	N	%	N	%	N	%
Fa 2005	448	100%	176	100%	181	100%	122	100%	123	100%	214	100%	255	100%	1,519	100%
Sp 2006	296	66%	140	80%	137	76%	85	70%	82	67%	163	76%	160	63%	1,063	70%
Su 2006	127	28%	53	30%	57	31%	29	24%	32	26%	64	30%	49	19%	411	27%
Fa 2006	190	42%	104	59%	100	55%	48	39%	56	46%	129	60%	99	39%	726	48%
Sp 2007	155	35%	85	48%	83	46%	42	34%	41	33%	118	55%	77	30%	601	40%
Su 2007	77	17%	47	27%	45	25%	17	14%	25	20%	61	29%	39	15%	311	20%
Fa 2007	131	29%	69	39%	66	36%	36	30%	32	26%	86	40%	63	25%	483	32%
Sp 2008	119	27%	51	29%	59	33%	16	13%	34	28%	75	35%	57	22%	411	27%



**Florida Community College at Jacksonville  
Cohort V – Tracking Report  
July, 2008**

**COHORT V Fall 2005 – Retention—Excluding Summers**

Since summer enrollment is lower than the Fall and Spring enrollments, summer term is removed from these charts to review the pattern of retention for the 2005 Cohort and each community.



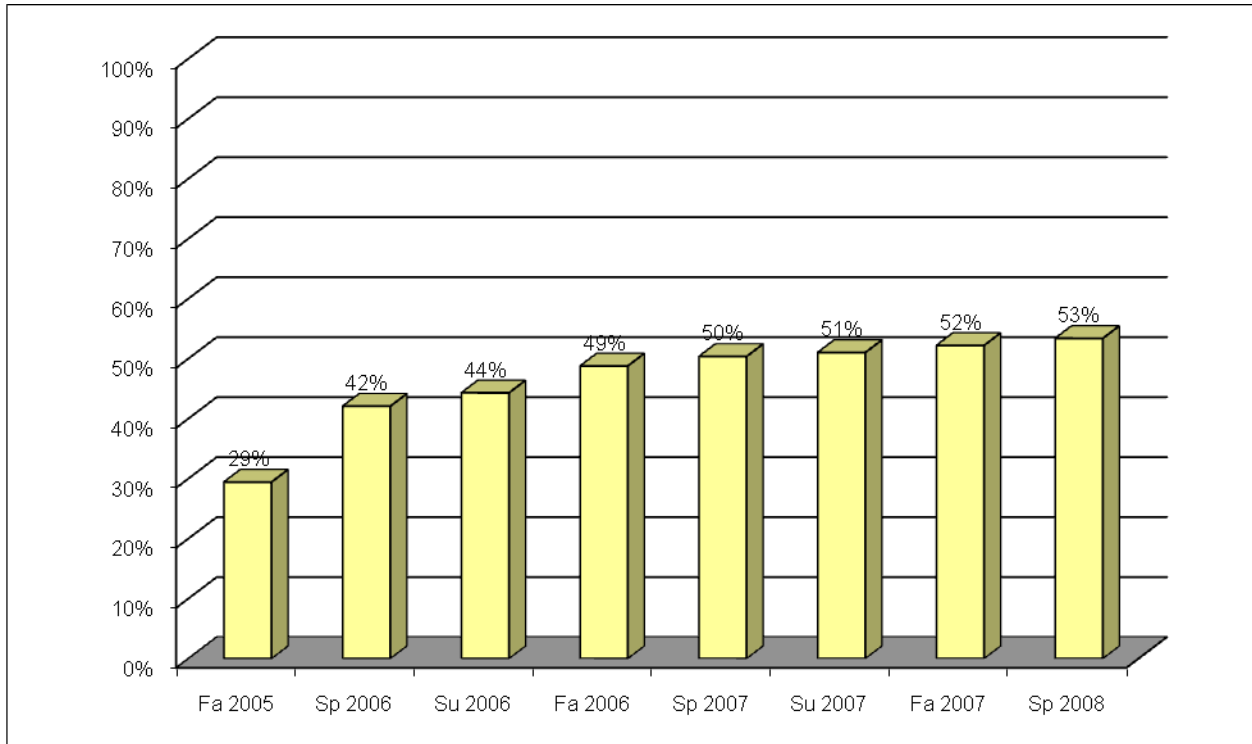
Term	Math		Reading		Language		Math/ Reading		Math/ Language		Reading/ Language		All 3		Total	
	N	%	N	%	N	%	N	%	N	%	N	%	N	%	N	%
Fa 2005	448	100%	176	100%	181	100%	122	100%	123	100%	214	100%	255	100%	1,519	100%
Sp 2006	296	66%	140	80%	137	76%	85	70%	82	67%	163	76%	160	63%	1,063	70%
Fa 2006	190	42%	104	59%	100	55%	48	39%	56	46%	129	60%	99	39%	726	48%
Sp 2007	155	35%	85	48%	83	46%	42	34%	41	33%	118	55%	77	30%	601	40%
Fa 2007	131	29%	69	39%	66	36%	36	30%	32	26%	86	40%	63	25%	483	32%
Sp 2008	119	27%	51	29%	59	33%	16	13%	34	28%	75	35%	57	22%	411	27%



**Florida Community College at Jacksonville  
Cohort V – Tracking Report  
July, 2008**

**COHORT V Fall 2005 – College Preparatory Passing Rate**

The students in the 2005 Fall cohort were tracked to determine if the student had passed all required college preparatory coursework at the college. By Spring 2008, 53% had completed requirements.



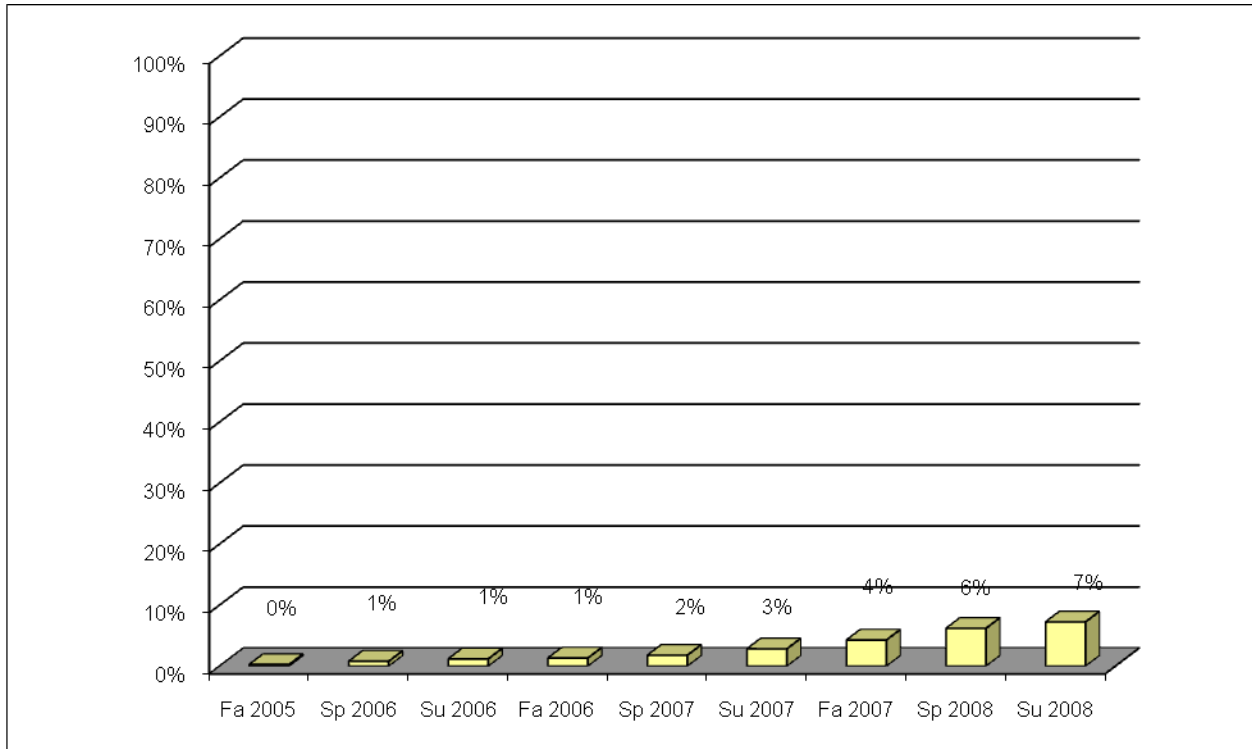
Term	Math		Reading		Language		Math/ Reading		Math/ Language		Reading/ Language		All 3		Total		Cumulative Total	
	N	%	N	%	N	%	N	%	N	%	N	%	N	%	N	%	N	%
Fa 2005	138	31%	89	51%	128	71%	9	7%	21	17%	53	25%	9	4%	447	29%	447	29%
Sp 2006	50	11%	33	19%	14	8%	16	13%	8	7%	50	23%	21	8%	192	13%	639	42%
Su 2006	7	2%	3	2%	3	2%	3	2%	3	2%	10	5%	5	2%	34	2%	673	44%
Fa 2006	11	2%	7	4%	3	2%	5	4%	6	5%	18	8%	18	7%	68	4%	741	49%
Sp 2007	8	2%	1	1%	0	0%	3	2%	3	2%	4	2%	5	2%	24	2%	765	50%
Su 2007	1	0%	1	1%	0	0%	0	0%	0	0%	7	3%	1	0%	10	1%	775	51%
Fa 2007	8	2%	5	3%	3	2%	1	1%	0	0%	1	0%	0	0%	18	1%	793	52%
Sp 2008	2	0%	0	0%	1	1%	2	2%	2	2%	6	3%	5	2%	18	1%	811	53%
<b>Total</b>	<b>225</b>	<b>50%</b>	<b>139</b>	<b>79%</b>	<b>152</b>	<b>84%</b>	<b>39</b>	<b>32%</b>	<b>43</b>	<b>35%</b>	<b>149</b>	<b>70%</b>	<b>64</b>	<b>25%</b>	<b>811</b>	<b>53%</b>	<b>811</b>	<b>53%</b>



**Florida Community College at Jacksonville  
Cohort V – Tracking Report  
July, 2008**

**COHORT V Fall 2005 – Completion Rate—Any Degree or Certificate**

Students in the Fall 2005 cohort were tracked to determine if the student earned a degree (A.A., A.S., or A. A.S.) or certificate at the college. By Summer 2008, 7% had earned a degree or certificate.

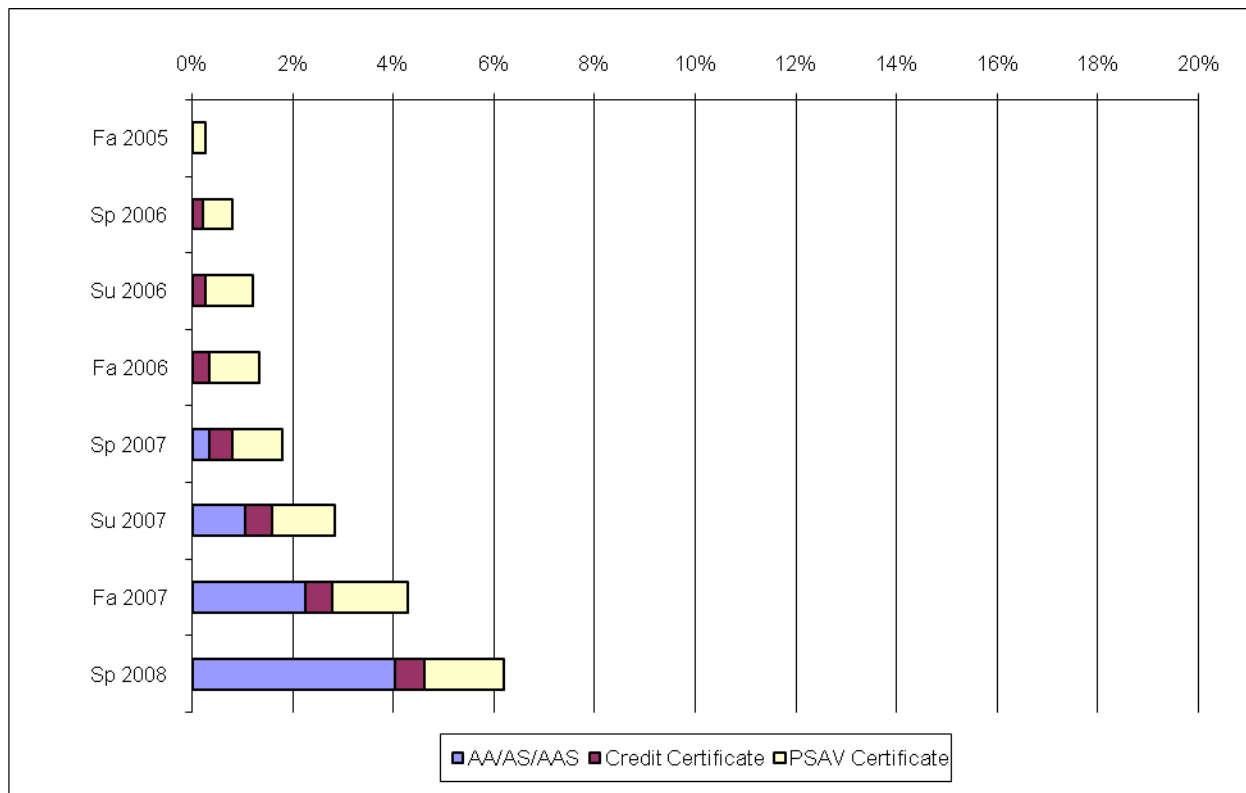


Term	Math		Reading		Language		Math/ Reading		Math/ Language		Reading/ Language		All 3		Total		Cumulative Total	
	N	%	N	%	N	%	N	%	N	%	N	%	N	%	N	%	N	Cum %
Fa 2005	2	0%	1	1%	0	0%	0	0%	1	1%	0	0%	0	0%	4	0%	4	0%
Sp 2006	3	1%	1	1%	1	1%	0	0%	0	0%	0	0%	3	1%	8	1%	12	1%
Su 2006	1	0%	1	1%	1	1%	2	2%	0	0%	1	0%	0	0%	6	0%	18	1%
Fa 2006	2	0%	0	0%	0	0%	0	0%	0	0%	0	0%	0	0%	2	0%	20	1%
Sp 2007	4	1%	3	2%	0	0%	0	0%	0	0%	0	0%	0	0%	7	0%	27	2%
Su 2007	2	0%	5	3%	4	2%	0	0%	0	0%	5	2%	0	0%	16	1%	43	3%
Fa 2007	6	1%	5	3%	5	3%	1	1%	1	1%	2	1%	2	1%	22	1%	65	4%
Sp 2008	11	2%	5	3%	5	3%	2	2%	2	2%	4	2%	0	0%	29	2%	94	6%
Su 2008	6	1%	4	2%	4	2%	0	0%	0	0%	1	0%	1	0%	16	1%	110	7%
<b>Total</b>	<b>37</b>	<b>8%</b>	<b>25</b>	<b>14%</b>	<b>20</b>	<b>11%</b>	<b>5</b>	<b>4%</b>	<b>4</b>	<b>3%</b>	<b>13</b>	<b>6%</b>	<b>6</b>	<b>2%</b>	<b>110</b>	<b>7%</b>	<b>110</b>	<b>7%</b>



**Florida Community College at Jacksonville  
Cohort V – Tracking Report  
July, 2008**

**COHORT V Fall 2005 – Completion Rate—By Degree or Certificate**



Term	A.A.S. A.A.S.		Credit Certificate		PSAV Certificate		Total	
	N	Cum %	N	Cum %	N	Cum %	N	%
Fa 2005	0	0%	0	0%	4	0%	4	0%
Sp 2006	0	0%	3	0%	5	1%	8	1%
Su 2006	0	0%	1	0%	5	1%	6	0%
Fa 2006	0	0%	1	0%	1	1%	2	0%
Sp 2007	5	0%	2	0%	0	1%	7	0%
Su 2007	11	1%	1	1%	4	1%	16	1%
Fa 2007	18	2%	0	1%	4	2%	22	1%
Sp 2008	27	4%	1	1%	1	2%	29	2%
<b>Total</b>	<b>61</b>	<b>4%</b>	<b>9</b>	<b>1%</b>	<b>24</b>	<b>2%</b>	<b>94</b>	<b>6%</b>