



**Florida Community College at Jacksonville
COHORT III – Tracking Report
July 2008**

FALL 2003

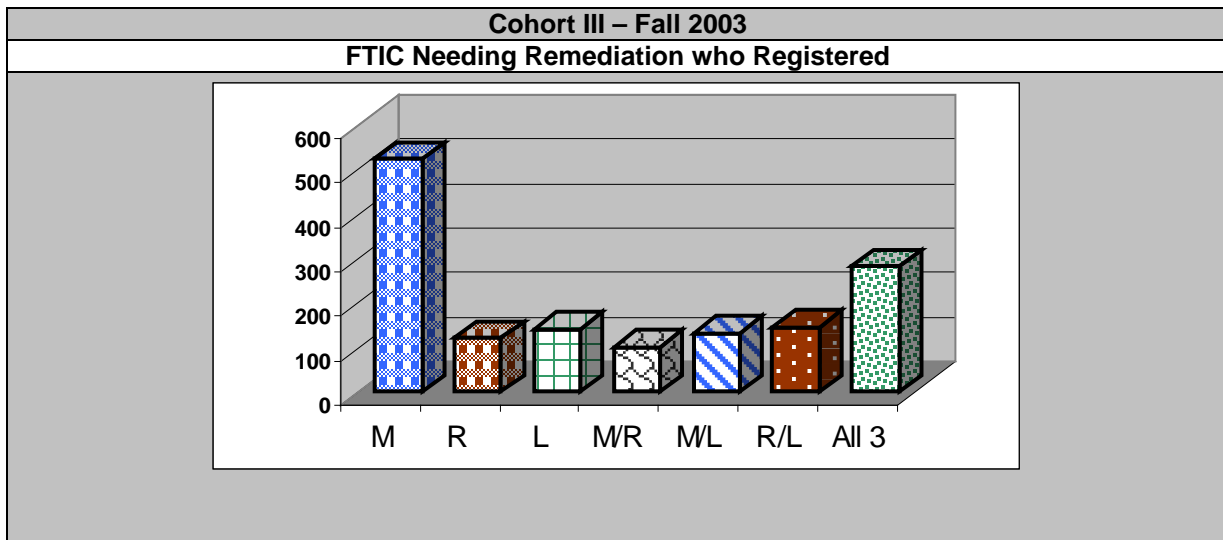
In Fall 2003, 8,239 students took an Entry Level Test at Florida Community College at Jacksonville (FCCJ). Of the students tested, 4,716 students (57%) were placed into some type of remediation.

From the students who took an entry level test in Fall 2003, 4,390 students (53%) registered in Fall 2003 term. The total First-time in College (FTIC) students was 2,320 and was 53% of the students who registered. Of the FTIC students, 1,447 (60% of FTIC and 33% of students who registered) were placed into some type of remediation.

From the students who took an entry level test in Fall 2003, 3,654 (44%) students never enrolled at FCCJ and 2,183 (58%) of these student were placed into some type of remediation

Community Identification

In 2003 Fall term, 1,447 students were placed into some type of remediation. These students were segmented into what type of remediation they were placed: 36%-math, 8%-reading, 10%-language, 7%-math/reading, 9%-math/language, 10%-reading/language, and 20%-all three areas.



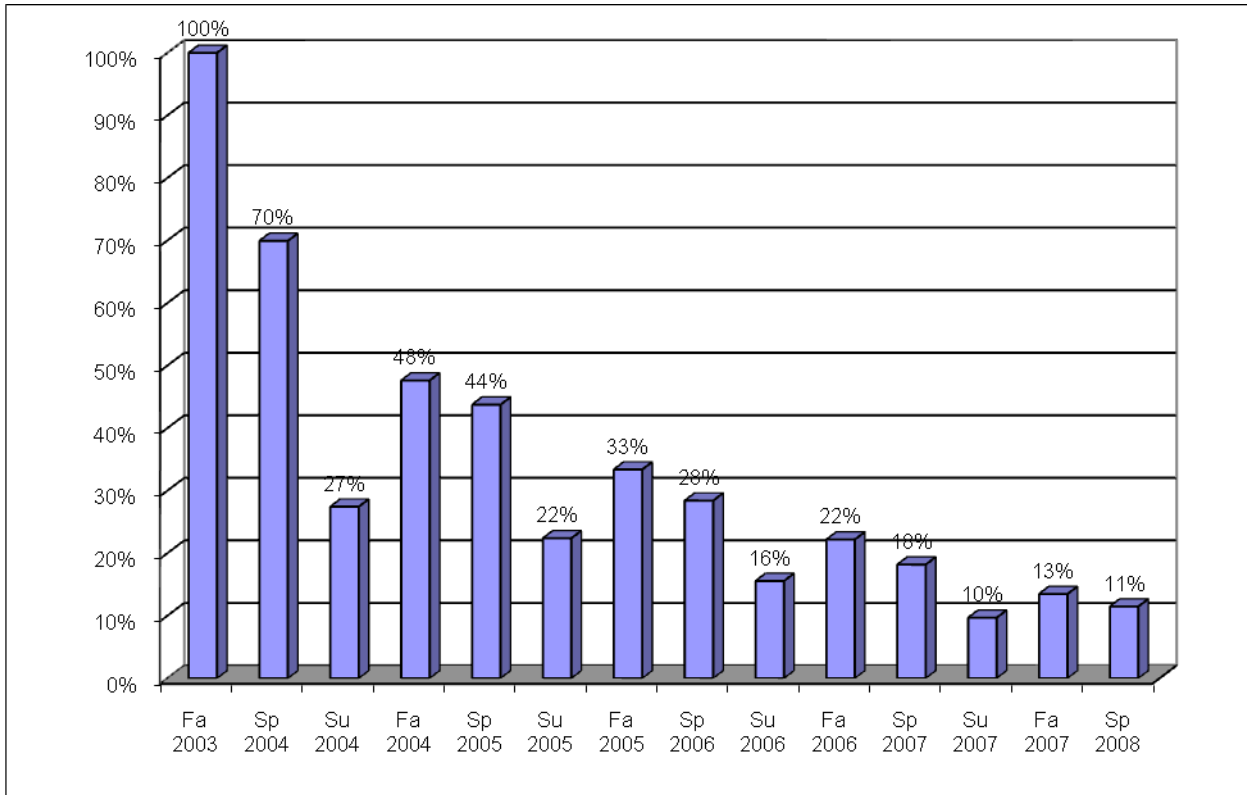
Community	Community Total	Percentage of Total	Community	Community Total
Math	525	36%	Not Enrolled	2,183
Reading	121	8%		
Language	141	10%		
Math/Reading	100	7%		
Math/Language	133	9%		
Reading/Language	146	10%		
All Three	281	20%		
TOTAL	1,447	100%		



**Florida Community College at Jacksonville
COHORT III – Tracking Report
July 2008**

COHORT III 2003 Fall – Retention Rate

The students in the 2003 Fall cohort were tracked to determine if the student was enrolled at the college in following terms. As of Spring 2008, 11% of the cohort was enrolled at the college.



Term	Math		Reading		Language		Math/ Reading		Math/ Language		Reading/ Language		All 3		Total	
	N	%	N	%	N	%	N	%	N	%	N	%	N	%	N	%
Fa 2003	525	100%	121	100%	141	100%	100	100%	133	100%	146	100%	281	100%	1,447	100%
Sp 2004	369	70%	88	73%	102	72%	72	72%	92	69%	110	75%	179	64%	1,012	70%
Su 2004	156	30%	34	28%	40	28%	24	24%	34	26%	43	29%	66	23%	397	27%
Fa 2004	248	47%	52	43%	70	50%	52	52%	55	41%	92	63%	120	43%	689	48%
Sp 2005	227	43%	61	50%	69	49%	39	39%	47	35%	87	60%	103	37%	633	44%
Su 2005	120	23%	35	29%	35	25%	20	20%	25	19%	44	30%	45	16%	324	22%
Fa 2005	175	33%	43	36%	53	38%	30	30%	38	29%	65	45%	79	28%	483	33%
Sp 2006	159	30%	33	27%	45	32%	25	25%	34	26%	52	36%	63	22%	411	28%
Su 2006	77	15%	20	17%	28	20%	12	12%	20	15%	31	21%	37	13%	225	16%
Fa 2006	107	20%	31	26%	35	25%	16	16%	30	23%	53	36%	49	17%	321	22%
Sp 2007	94	18%	26	21%	27	19%	16	16%	21	16%	37	25%	42	15%	263	18%
Su 2007	53	10%	8	7%	20	14%	8	8%	10	8%	19	13%	22	8%	140	10%
Fa 2007	68	13%	14	12%	26	18%	13	13%	17	13%	24	16%	33	12%	195	13%
Sp 2008	64	12%	11	9%	21	15%	9	9%	17	13%	18	12%	26	9%	166	11%

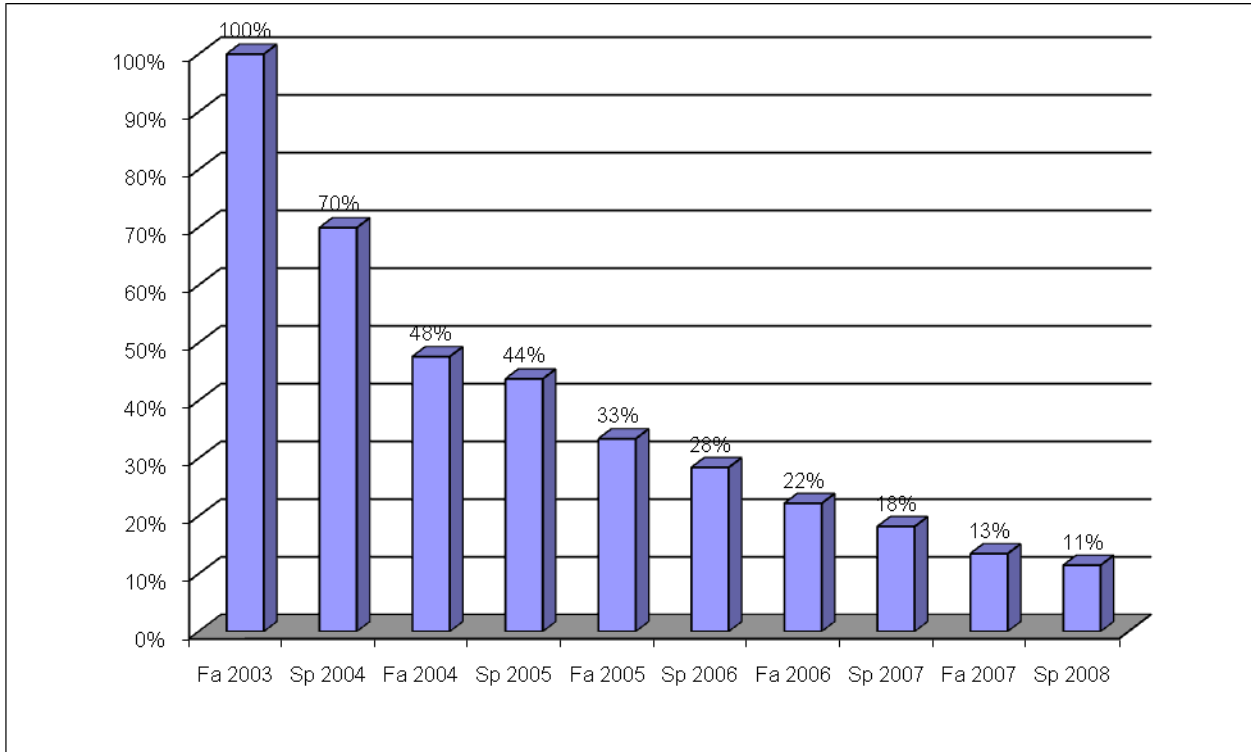
Noter: Percentages are calculated from the community totals. (i.e. 70% (369) of Cohort III math community (525) are persisting at FCCJ in Spring 2004)



**Florida Community College at Jacksonville
COHORT III – Tracking Report
July 2008**

COHORT III 2003 Fall – Retention Rate-excluding summers

Since summer enrollment is lower than the Fall and Spring enrollments, summer term is removed from these charts to review the pattern of retention for the 2003 cohort and each community.



Term	Math		Reading		Language		Math/ Reading		Math/ Language		Reading/ Language		All 3		Total	
	N	%	N	%	N	%	N	%	N	%	N	%	N	%	N	%
Fa 2003	525	100%	121	100%	141	100%	100	100%	133	100%	146	100%	281	100%	1,447	100%
Sp 2004	369	70%	88	73%	102	72%	72	72%	92	69%	110	75%	179	64%	1,012	70%
Fa 2004	248	47%	52	43%	70	50%	52	52%	55	41%	92	63%	120	43%	689	48%
Sp 2005	227	43%	61	50%	69	49%	39	39%	47	35%	87	60%	103	37%	633	44%
Fa 2005	175	33%	43	36%	53	38%	30	30%	38	29%	65	45%	79	28%	483	33%
Sp 2006	159	30%	33	27%	45	32%	25	25%	34	26%	52	36%	63	22%	411	28%
Fa 2006	107	20%	31	26%	35	25%	16	16%	30	23%	53	36%	49	17%	321	22%
Sp 2007	94	18%	26	21%	27	19%	16	16%	21	16%	37	25%	42	15%	263	18%
Fa 2007	68	13%	14	12%	26	18%	13	13%	17	13%	24	16%	33	12%	195	13%
Sp 2008	64	12%	11	9%	21	15%	9	9%	17	13%	18	12%	26	9%	166	11%

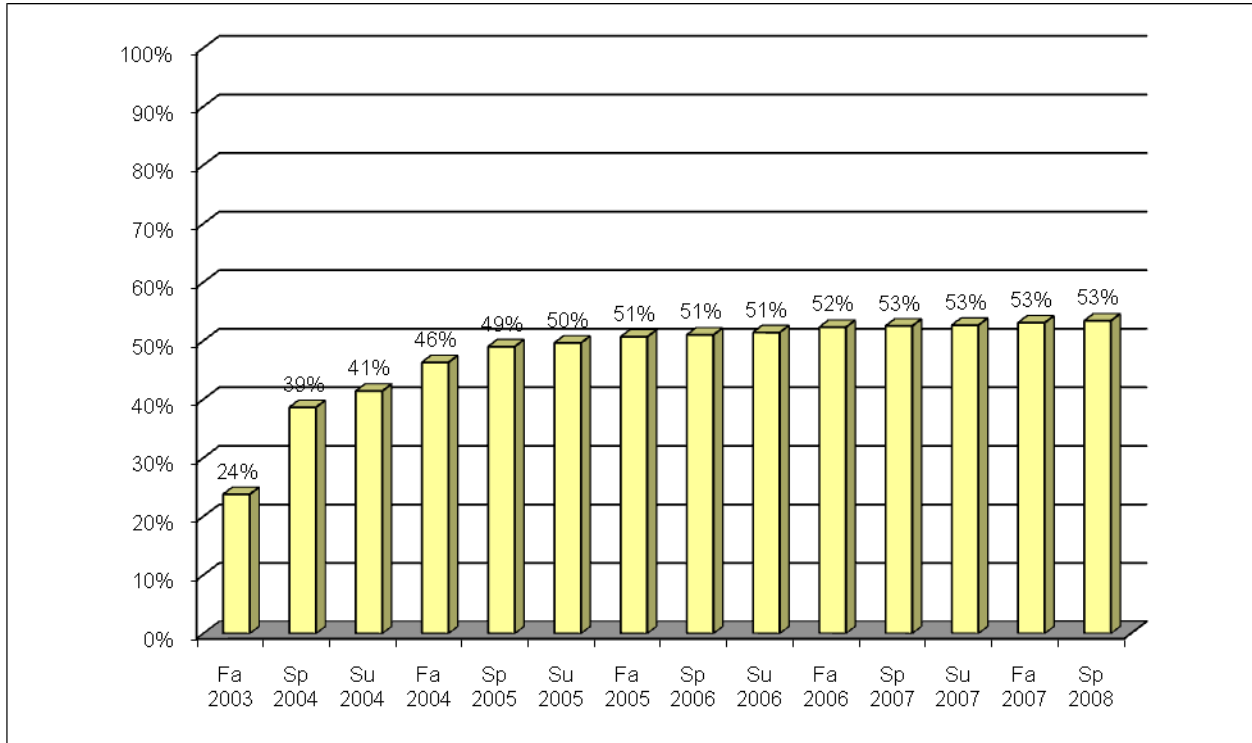
Percentages are calculated from the community totals. (i.e. 70% (369) of Cohort III math community (525) are persisting at FCCJ in Spring 2004)



**Florida Community College at Jacksonville
COHORT III – Tracking Report
July 2008**

COHORT III 2003 Fall – College Preparatory Passing Rate

The students in the 2003 Fall cohort were tracked to determine if the student had passed all required college preparatory coursework at the college. As of Spring 2008, 53% had completed requirements.



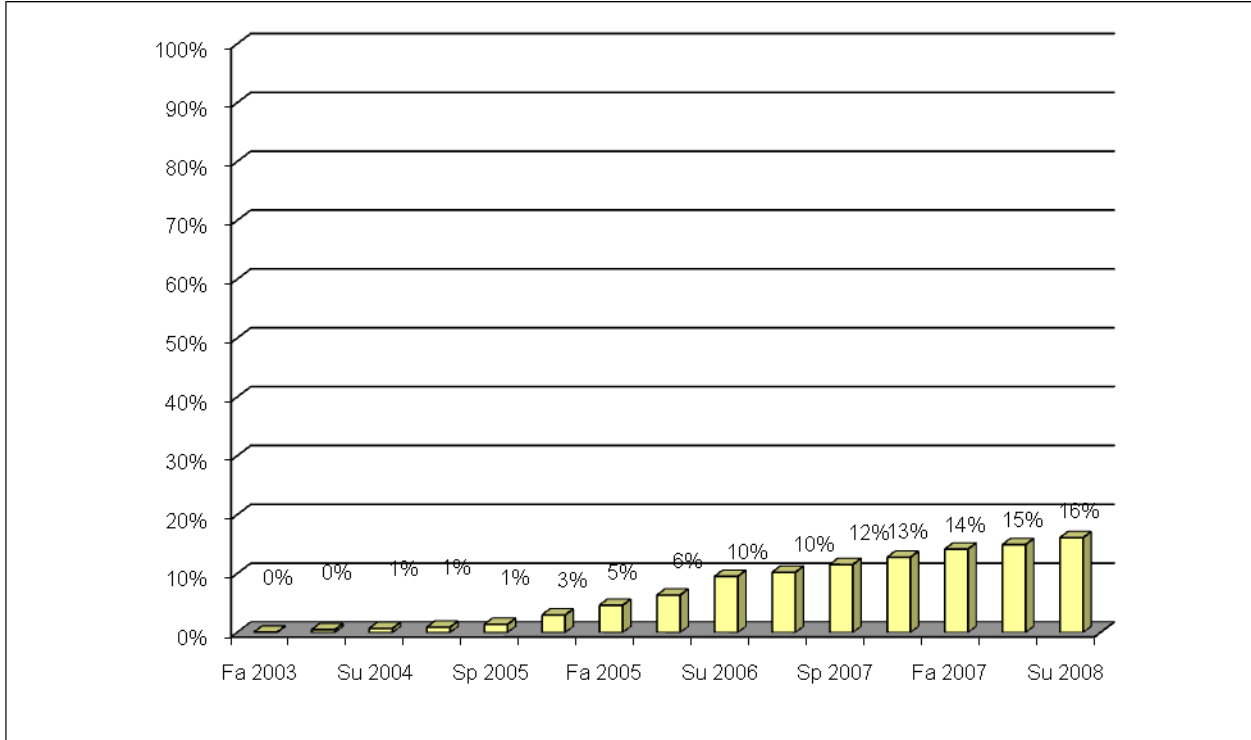
Term	Math		Reading		Language		Math/ Reading		Math/ Language		Reading/ Language		All 3		Total		Cumulative Total	
	N	%	N	%	N	%	N	%	N	%	N	%	N	%	N	%	N	%
Fa 2003	136	26%	49	40%	92	65%	10	10%	17	13%	36	25%	4	1%	344	24%	344	24%
Sp 2004	70	13%	28	23%	18	13%	17	17%	16	12%	36	25%	30	11%	215	15%	559	39%
Su 2004	19	4%	3	2%	2	1%	2	2%	6	5%	3	2%	5	2%	40	3%	599	41%
Fa 2004	26	5%	6	5%	1	1%	8	8%	2	2%	13	9%	15	5%	71	5%	670	46%
Sp 2005	10	2%	2	2%	1	1%	1	1%	7	5%	7	5%	11	4%	39	3%	709	49%
Su 2005	5	1%	0	0%	0	0%	0	0%	0	0%	0	0%	4	1%	9	1%	718	50%
Fa 2005	4	1%	0	0%	0	0%	3	3%	2	2%	1	1%	5	2%	15	1%	733	51%
Sp 2006	1	0%	1	1%	0	0%	1	1%	1	1%	0	0%	1	0%	5	0%	738	51%
Su 2006	2	0%	0	0%	0	0%	0	0%	1	1%	1	1%	2	1%	6	0%	744	51%
Fa 2006	4	1%	0	0%	2	1%	0	0%	2	2%	2	1%	3	1%	13	1%	757	52%
Sp 2007	0	0%	1	1%	0	0%	1	1%	0	0%	0	0%	1	0%	3	0%	760	53%
Su 2007	1	0%	0	0%	0	0%	0	0%	1	1%	0	0%	0	0%	2	0%	762	53%
Fa 2007	6	1%	0	0%	0	0%	0	0%	0	0%	0	0%	0	0%	6	0%	768	53%
Sp 2008	0	0%	0	0%	3	2%	0	0%	0	0%	1	1%	1	0%	5	0%	773	53%
Total	284	54%	90	74%	119	84%	43	43%	55	41%	100	68%	82	29%	773	53%	773	53%



**Florida Community College at Jacksonville
COHORT III – Tracking Report
July 2008**

COHORT III 2003 Fall – Completion Rate—Any Degree or Certificate

The students who are in the 2003 Fall cohort were tracked to determine if the student earned a degree or certificate at the college. By Summer 2008, 16% had earned a degree or certificate at the college.

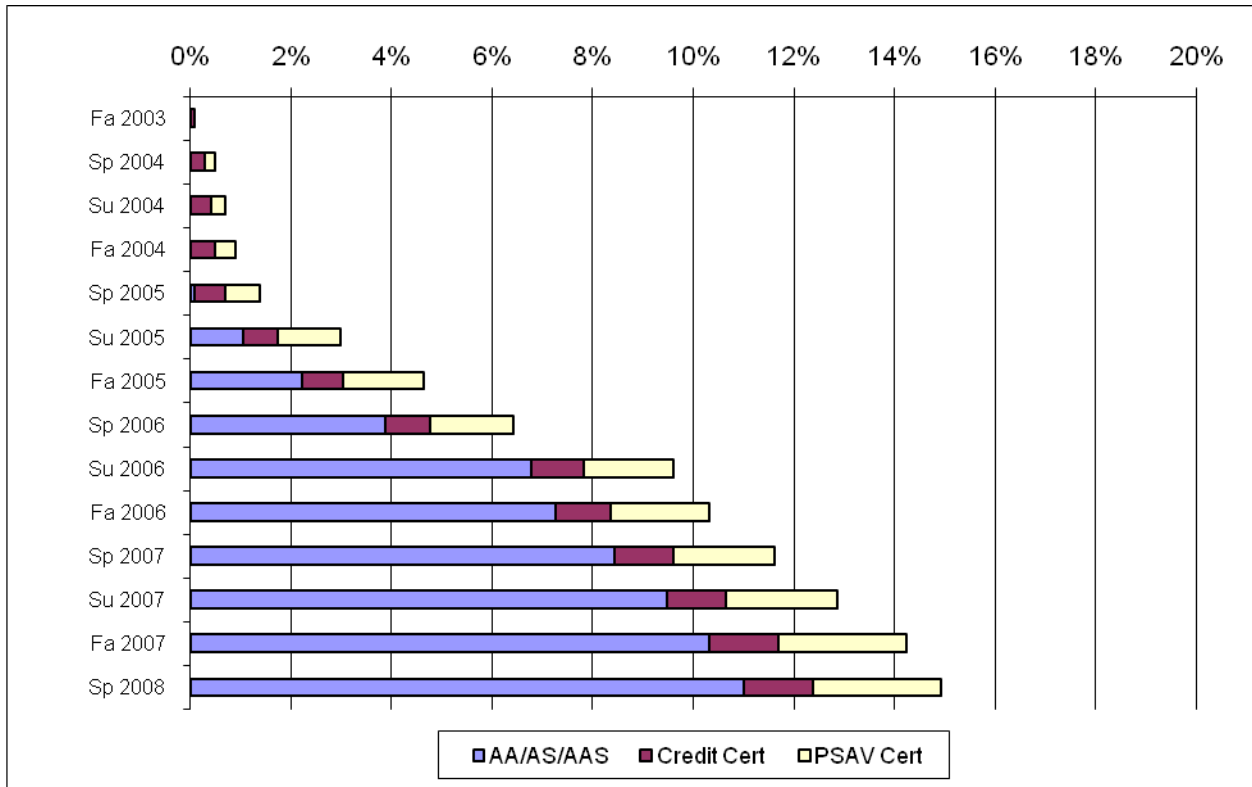


Term	Math		Reading		Language		Math/Reading		Math/Language		Reading/Language		All 3		Total		Cumulative Total	
	N	%	N	%	N	%	N	%	N	%	N	%	N	%	N	%	N	Cum %
Fa 2003	0	0%	0	0%	0	0%	1	1%	0	0%	0	0%	0	0%	1	0%	1	0%
Sp 2004	4	1%	0	0%	0	0%	0	0%	0	0%	0	0%	2	1%	6	0%	7	0%
Su 2004	1	0%	0	0%	0	0%	0	0%	1	1%	1	1%	0	0%	3	0%	10	1%
Fa 2004	1	0%	1	1%	0	0%	1	1%	0	0%	0	0%	0	0%	3	0%	13	1%
Sp 2005	3	1%	0	0%	0	0%	2	2%	0	0%	0	0%	2	1%	7	0%	20	1%
Su 2005	9	2%	7	6%	3	2%	2	2%	1	1%	1	1%	0	0%	23	2%	43	3%
Fa 2005	12	2%	4	3%	3	2%	2	2%	1	1%	2	1%	0	0%	24	2%	67	5%
Sp 2006	14	3%	2	2%	3	2%	1	1%	0	0%	3	2%	2	1%	25	2%	92	6%
Su 2006	16	3%	6	5%	7	5%	3	3%	4	3%	7	5%	3	1%	46	3%	138	10%
Fa 2006	6	1%	1	1%	0	0%	2	2%	0	0%	1	1%	0	0%	10	1%	148	10%
Sp 2007	7	1%	4	3%	0	0%	0	0%	3	2%	5	3%	0	0%	19	1%	167	12%
Su 2007	11	2%	0	0%	2	1%	0	0%	0	0%	4	3%	1	0%	18	1%	185	13%
Fa 2007	9	2%	3	2%	3	2%	0	0%	2	2%	2	1%	1	0%	20	1%	205	14%
Sp 2008	6	1%	1	1%	0	0%	1	1%	2	2%	1	1%	0	0%	11	1%	216	15%
Su 2008	3	1%	2	2%	3	2%	1	1%	5	4%	2	1%	1	0%	17	1%	233	16%
Total	102	19%	31	26%	24	17%	16	16%	19	14%	29	20%	12	4%	233	15%	233	16%



**Florida Community College at Jacksonville
COHORT III – Tracking Report
July 2008**

COHORT III 2003 Fall – Completion Rate-By Degree or Certificate



Term	A.A.S. A.A.S.		Credit Certificate		PSAV Certificate		Total	
	N	Cum %	N	Cum %	N	Cum %	N	%
Fa 2003	0	0%	1	0%	0	0%	1	0%
Sp 2004	0	0%	3	0%	3	0%	6	0%
Su 2004	0	0%	2	0%	1	0%	3	0%
Fa 2004	0	0%	1	0%	2	0%	3	0%
Sp 2005	1	0%	2	1%	4	1%	7	0%
Su 2005	14	1%	1	1%	8	1%	23	2%
Fa 2005	17	2%	2	1%	5	2%	24	2%
Sp 2006	24	4%	1	1%	1	2%	26	2%
Su 2006	42	7%	2	1%	2	2%	46	3%
Fa 2006	7	7%	1	1%	2	2%	10	1%
Sp 2007	17	8%	1	1%	1	2%	19	1%
Su 2007	15	9%	0	1%	3	2%	18	1%
Fa 2007	12	10%	3	1%	5	3%	20	1%
Sp 2008	10	11%	0	1%	0	3%	10	1%
Total	159	11%	20	1%	37	3%	216	15%