



**Florida Community College at Jacksonville  
COHORT II Tracking Report  
July 2008**

**FALL 2002**

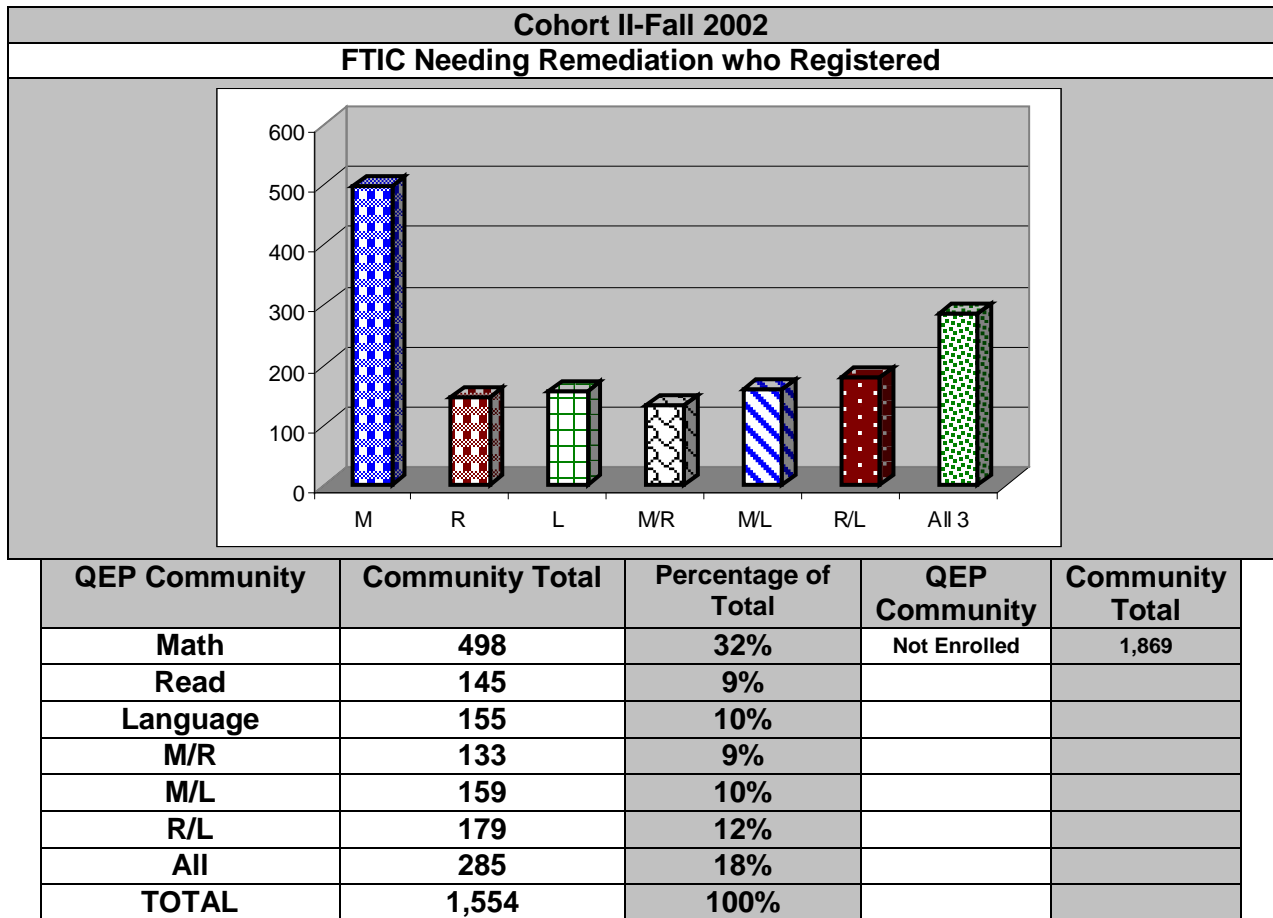
In Fall 2002, 8,701 students took an Entry Level Test at Florida Community College at Jacksonville (FCCJ). Of the students tested, 4,648 students (53%) were placed into some type of remediation.

From the students who took an entry level test in Fall 2002, 4,881 students (56%) registered in Fall 2002 term. The total First-time in College (FTIC) students was 2,442 and was 50% of the students who registered. Of the FTIC students, 1,554 (64% of FTIC and 32% of students who registered) were placed into some type of remediation.

From the students who took an entry level test in Fall 2002, 3,595 (41%) students never enrolled at FCCJ and 1,869 (52%) of these students were placed into some type of remediation.

**Community Identification**

In 2002 Fall term, 1,554 students were placed into some type of remediation. These students were segmented into what type of remediation they were placed: 32%-math, 9%-reading, 10%-language, 9%-math/reading, 10%-math/language, 12%-reading/language, and 18%-all three areas.

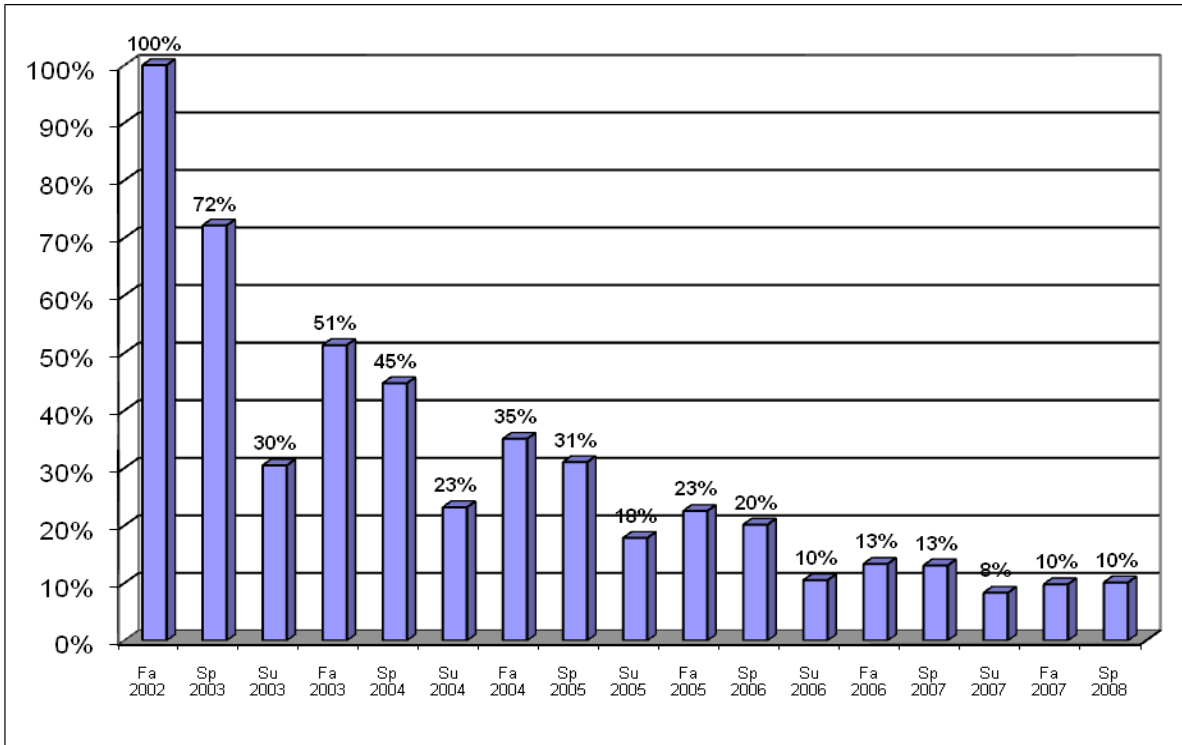




**Florida Community College at Jacksonville  
COHORT II Tracking Report  
July 2008**

**COHORT II 2002 Fall – Retention Rate**

Students in the 2002 Fall Cohort were tracked to determine if the student was enrolled at the college in the following terms. As of Spring 2008, 10% of the cohort was currently enrolled.



| Term    | Math |      | Reading |      | Language |      | Math/<br>Reading |      | Math/<br>Language |      | Reading/<br>Language |      | All 3 |      | Total |      |
|---------|------|------|---------|------|----------|------|------------------|------|-------------------|------|----------------------|------|-------|------|-------|------|
|         | N    | %    | N       | %    | N        | %    | N                | %    | N                 | %    | N                    | %    | N     | %    | N     | %    |
| Fa 2002 | 498  | 100% | 145     | 100% | 155      | 100% | 133              | 100% | 159               | 100% | 179                  | 100% | 285   | 100% | 1,554 | 100% |
| Sp 2003 | 345  | 69%  | 111     | 77%  | 124      | 80%  | 89               | 67%  | 113               | 71%  | 148                  | 83%  | 191   | 67%  | 1,121 | 72%  |
| Su 2003 | 155  | 31%  | 48      | 33%  | 60       | 39%  | 42               | 32%  | 35                | 22%  | 60                   | 34%  | 73    | 26%  | 473   | 30%  |
| Fa 2003 | 249  | 50%  | 92      | 63%  | 99       | 64%  | 65               | 49%  | 71                | 45%  | 108                  | 60%  | 114   | 40%  | 798   | 51%  |
| Sp 2004 | 213  | 43%  | 78      | 54%  | 85       | 55%  | 52               | 39%  | 59                | 37%  | 110                  | 61%  | 98    | 34%  | 695   | 45%  |
| Su 2004 | 109  | 22%  | 40      | 28%  | 54       | 35%  | 26               | 20%  | 31                | 19%  | 53                   | 30%  | 47    | 16%  | 360   | 23%  |
| Fa 2004 | 160  | 32%  | 54      | 37%  | 80       | 52%  | 32               | 24%  | 46                | 29%  | 88                   | 49%  | 85    | 30%  | 545   | 35%  |
| Sp 2005 | 146  | 29%  | 51      | 35%  | 59       | 38%  | 34               | 26%  | 42                | 26%  | 73                   | 41%  | 77    | 27%  | 482   | 31%  |
| Su 2005 | 87   | 17%  | 24      | 17%  | 37       | 24%  | 26               | 20%  | 25                | 16%  | 36                   | 20%  | 42    | 15%  | 277   | 18%  |
| Fa 2005 | 114  | 23%  | 33      | 23%  | 51       | 33%  | 25               | 19%  | 23                | 14%  | 52                   | 29%  | 52    | 18%  | 350   | 23%  |
| Sp 2006 | 98   | 20%  | 32      | 22%  | 39       | 25%  | 23               | 17%  | 21                | 13%  | 50                   | 28%  | 50    | 18%  | 313   | 20%  |
| Su 2006 | 43   | 9%   | 16      | 11%  | 30       | 19%  | 12               | 9%   | 15                | 9%   | 21                   | 12%  | 26    | 9%   | 163   | 10%  |
| Fa 2006 | 54   | 11%  | 21      | 14%  | 33       | 21%  | 15               | 11%  | 17                | 11%  | 34                   | 19%  | 33    | 12%  | 207   | 13%  |
| Sp 2007 | 60   | 12%  | 22      | 15%  | 24       | 15%  | 15               | 11%  | 16                | 10%  | 33                   | 18%  | 33    | 12%  | 203   | 13%  |
| Su 2007 | 44   | 9%   | 12      | 8%   | 14       | 9%   | 12               | 9%   | 10                | 6%   | 15                   | 8%   | 22    | 8%   | 129   | 8%   |
| Fa 2007 | 39   | 8%   | 18      | 12%  | 19       | 12%  | 15               | 11%  | 13                | 8%   | 25                   | 14%  | 23    | 8%   | 152   | 10%  |
| Sp 2008 | 53   | 11%  | 16      | 11%  | 17       | 11%  | 13               | 10%  | 12                | 8%   | 23                   | 13%  | 23    | 8%   | 157   | 10%  |

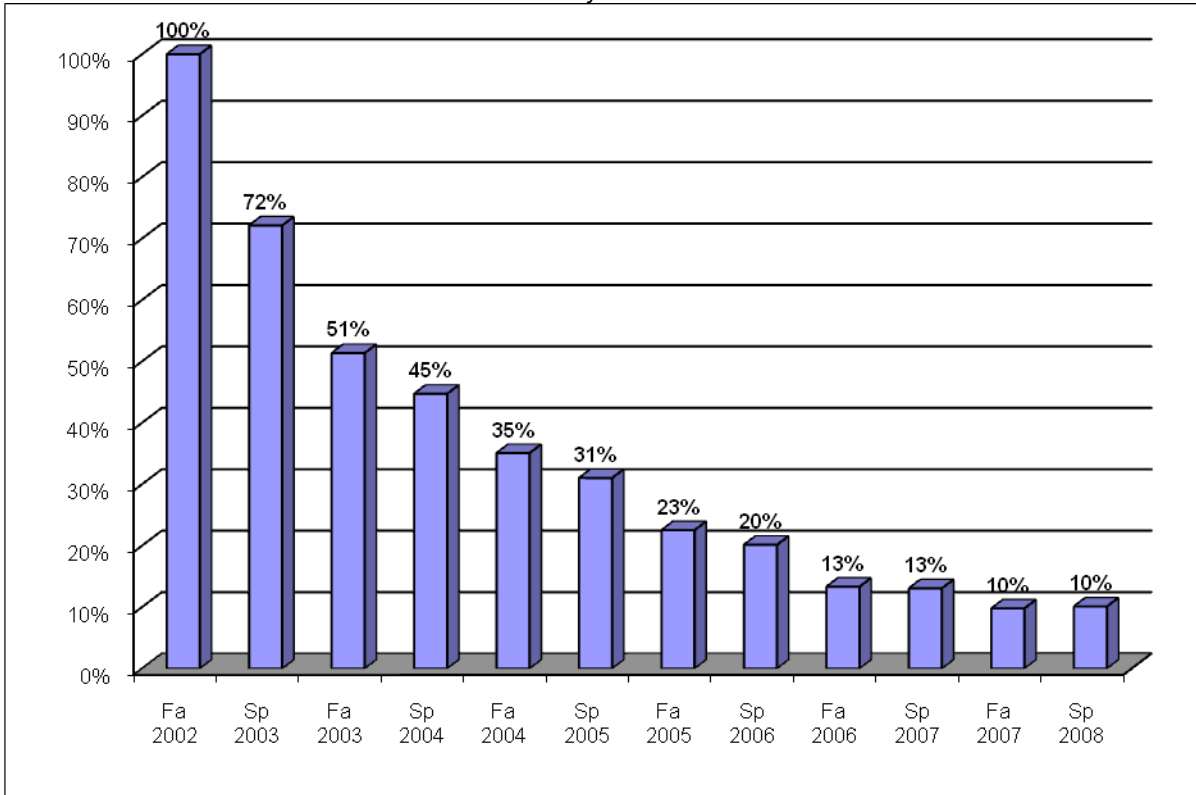
Note: Percentages are calculated from the community totals (i.e. 69% (345) of Cohort II math community (498) are retained at FCCJ in Spring 2003).



**Florida Community College at Jacksonville  
COHORT II Tracking Report  
July 2008**

**COHORT II 2002 Fall – Retention Rate-excluding summers**

Since summer enrollment is lower than the Fall and Spring enrollments, summer term is removed from these charts to review the pattern of retention for the 2002 cohort and each community.



| Term    | Math |      | Reading |      | Language |      | Math/<br>Reading |      | Math/<br>Language |      | Reading/<br>Language |      | All 3 |      | Total |      |
|---------|------|------|---------|------|----------|------|------------------|------|-------------------|------|----------------------|------|-------|------|-------|------|
|         | N    | %    | N       | %    | N        | %    | N                | %    | N                 | %    | N                    | %    | N     | %    | N     | %    |
| Fa 2002 | 498  | 100% | 145     | 100% | 155      | 100% | 133              | 100% | 159               | 100% | 179                  | 100% | 285   | 100% | 1,554 | 100% |
| Sp 2003 | 345  | 69%  | 111     | 77%  | 124      | 80%  | 89               | 67%  | 113               | 71%  | 148                  | 83%  | 191   | 67%  | 1,121 | 72%  |
| Fa 2003 | 249  | 50%  | 92      | 63%  | 99       | 64%  | 65               | 49%  | 71                | 45%  | 108                  | 60%  | 114   | 40%  | 798   | 51%  |
| Sp 2004 | 213  | 43%  | 78      | 54%  | 85       | 55%  | 52               | 39%  | 59                | 37%  | 110                  | 61%  | 98    | 34%  | 695   | 45%  |
| Fa 2004 | 160  | 32%  | 54      | 37%  | 80       | 52%  | 32               | 24%  | 46                | 29%  | 88                   | 49%  | 85    | 30%  | 545   | 35%  |
| Sp 2005 | 146  | 29%  | 51      | 35%  | 59       | 38%  | 34               | 26%  | 42                | 26%  | 73                   | 41%  | 77    | 27%  | 482   | 31%  |
| Fa 2005 | 114  | 23%  | 33      | 23%  | 51       | 33%  | 25               | 19%  | 23                | 14%  | 52                   | 29%  | 52    | 18%  | 350   | 23%  |
| Sp 2006 | 98   | 20%  | 32      | 22%  | 39       | 25%  | 23               | 17%  | 21                | 13%  | 50                   | 28%  | 50    | 18%  | 313   | 20%  |
| Fa 2006 | 54   | 11%  | 21      | 14%  | 33       | 21%  | 15               | 11%  | 17                | 11%  | 34                   | 19%  | 33    | 12%  | 207   | 13%  |
| Sp 2007 | 60   | 12%  | 22      | 15%  | 24       | 15%  | 15               | 11%  | 16                | 10%  | 33                   | 18%  | 33    | 12%  | 203   | 13%  |
| Fa 2007 | 39   | 8%   | 18      | 12%  | 19       | 12%  | 15               | 11%  | 13                | 8%   | 25                   | 14%  | 23    | 8%   | 152   | 10%  |
| Sp 2008 | 53   | 11%  | 16      | 11%  | 17       | 11%  | 13               | 10%  | 12                | 8%   | 23                   | 13%  | 23    | 8%   | 157   | 10%  |

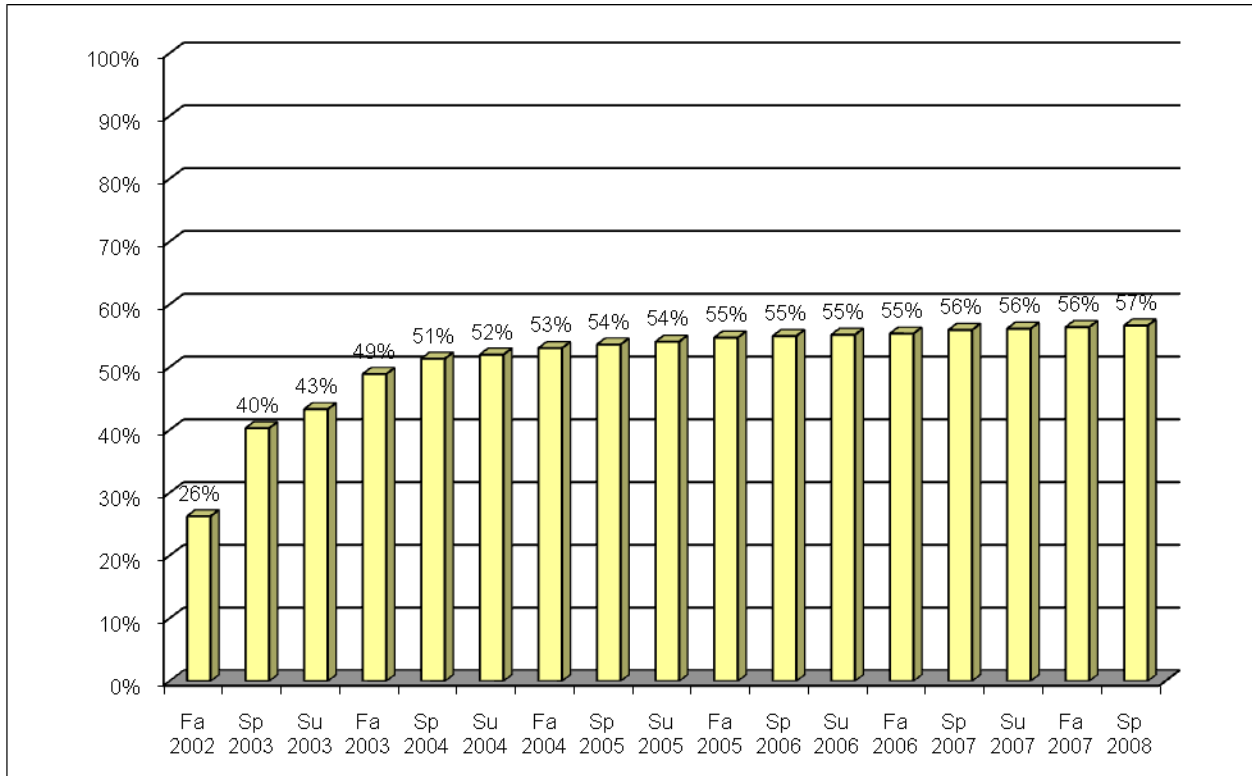
Percentages are calculated from the community totals. (i.e. 69% (345) of Cohort II math community (498) are retained at FCCJ in Spring 2003)



**Florida Community College at Jacksonville  
COHORT II Tracking Report  
July 2008**

**COHORT II 2002 Fall – College Preparatory Passing Rate**

The students in the 2002 Fall cohort were tracked to determine if the student had passed all required college preparatory coursework at the college. As of Spring 2008, 57% of the cohort had completed requirements.



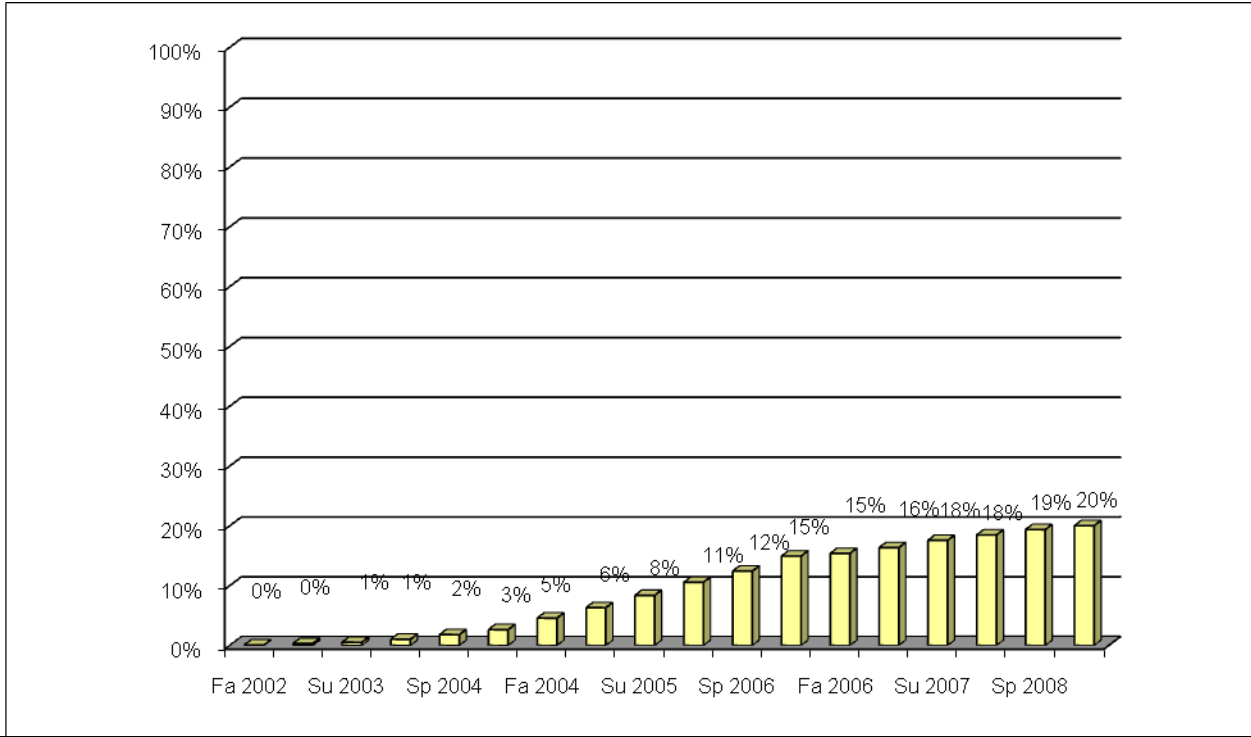
| Term         | Math       |            | Reading    |            | Language   |            | Math/<br>Reading |            | Math/<br>Language |            | Reading/<br>Language |            | All 3     |            | Total      |            | Cumulative<br>Total |            |
|--------------|------------|------------|------------|------------|------------|------------|------------------|------------|-------------------|------------|----------------------|------------|-----------|------------|------------|------------|---------------------|------------|
|              | N          | %          | N          | %          | N          | %          | N                | %          | N                 | %          | N                    | %          | N         | %          | N          | %          | N                   | %          |
| Fa 2002      | 131        | 26%        | 79         | 54%        | 100        | 65%        | 14               | 11%        | 25                | 16%        | 47                   | 26%        | 12        | 4%         | 408        | 26%        | 408                 | 26%        |
| Sp 2003      | 71         | 14%        | 22         | 15%        | 17         | 11%        | 20               | 15%        | 17                | 11%        | 48                   | 27%        | 23        | 8%         | 218        | 14%        | 626                 | 40%        |
| Su 2003      | 19         | 4%         | 3          | 2%         | 3          | 2%         | 6                | 5%         | 2                 | 1%         | 5                    | 3%         | 9         | 3%         | 47         | 3%         | 673                 | 43%        |
| Fa 2003      | 29         | 6%         | 12         | 8%         | 7          | 5%         | 8                | 6%         | 9                 | 6%         | 12                   | 7%         | 10        | 4%         | 87         | 6%         | 760                 | 49%        |
| Sp 2004      | 6          | 1%         | 3          | 2%         | 2          | 1%         | 4                | 3%         | 5                 | 3%         | 11                   | 6%         | 7         | 2%         | 38         | 2%         | 798                 | 51%        |
| Su 2004      | 2          | 0%         | 0          | 0%         | 1          | 1%         | 1                | 1%         | 2                 | 1%         | 2                    | 1%         | 2         | 1%         | 10         | 1%         | 808                 | 52%        |
| Fa 2004      | 5          | 1%         | 0          | 0%         | 0          | 0%         | 0                | 0%         | 2                 | 1%         | 1                    | 1%         | 8         | 3%         | 16         | 1%         | 824                 | 53%        |
| Sp 2005      | 2          | 0%         | 0          | 0%         | 0          | 0%         | 1                | 1%         | 2                 | 1%         | 1                    | 1%         | 3         | 1%         | 9          | 1%         | 833                 | 54%        |
| Su 2005      | 3          | 1%         | 0          | 0%         | 0          | 0%         | 1                | 1%         | 0                 | 0%         | 1                    | 1%         | 2         | 1%         | 7          | 0%         | 840                 | 54%        |
| Fa 2005      | 2          | 0%         | 0          | 0%         | 1          | 1%         | 0                | 0%         | 1                 | 1%         | 2                    | 1%         | 4         | 1%         | 10         | 1%         | 850                 | 55%        |
| Sp 2006      | 2          | 0%         | 0          | 0%         | 0          | 0%         | 0                | 0%         | 0                 | 0%         | 1                    | 1%         | 1         | 0%         | 4          | 0%         | 854                 | 55%        |
| Su 2006      | 1          | 0%         | 0          | 0%         | 0          | 0%         | 0                | 0%         | 0                 | 0%         | 0                    | 0%         | 2         | 1%         | 3          | 0%         | 857                 | 55%        |
| Fa 2006      | 0          | 0%         | 0          | 0%         | 0          | 0%         | 0                | 0%         | 0                 | 0%         | 1                    | 1%         | 2         | 1%         | 3          | 0%         | 860                 | 55%        |
| Sp 2007      | 2          | 0%         | 1          | 1%         | 1          | 1%         | 1                | 1%         | 0                 | 0%         | 1                    | 1%         | 3         | 1%         | 9          | 1%         | 869                 | 56%        |
| Su 2007      | 2          | 0%         | 0          | 0%         | 0          | 0%         | 1                | 1%         | 0                 | 0%         | 0                    | 0%         | 0         | 0%         | 3          | 0%         | 872                 | 56%        |
| Fa 2007      | 1          | 0%         | 0          | 0%         | 0          | 0%         | 1                | 1%         | 1                 | 1%         | 1                    | 1%         | 0         | 0%         | 4          | 0%         | 876                 | 56%        |
| Sp 2008      | 0          | 0%         | 0          | 0%         | 0          | 0%         | 2                | 2%         | 0                 | 0%         | 1                    | 1%         | 1         | 0%         | 4          | 0%         | 880                 | 57%        |
| <b>Total</b> | <b>278</b> | <b>56%</b> | <b>120</b> | <b>83%</b> | <b>132</b> | <b>85%</b> | <b>60</b>        | <b>45%</b> | <b>66</b>         | <b>42%</b> | <b>135</b>           | <b>75%</b> | <b>89</b> | <b>31%</b> | <b>880</b> | <b>57%</b> | <b>880</b>          | <b>57%</b> |



**Florida Community College at Jacksonville  
COHORT II Tracking Report  
July 2008**

**COHORT II 2002 Fall – Completion Rate-Any Degree/Certificate**

The students who are in the 2002 Fall cohort were tracked to determine if the student earned a degree or certificate at the college. By Summer 2008, 20% of the cohort earned a degree or certificate at the college.

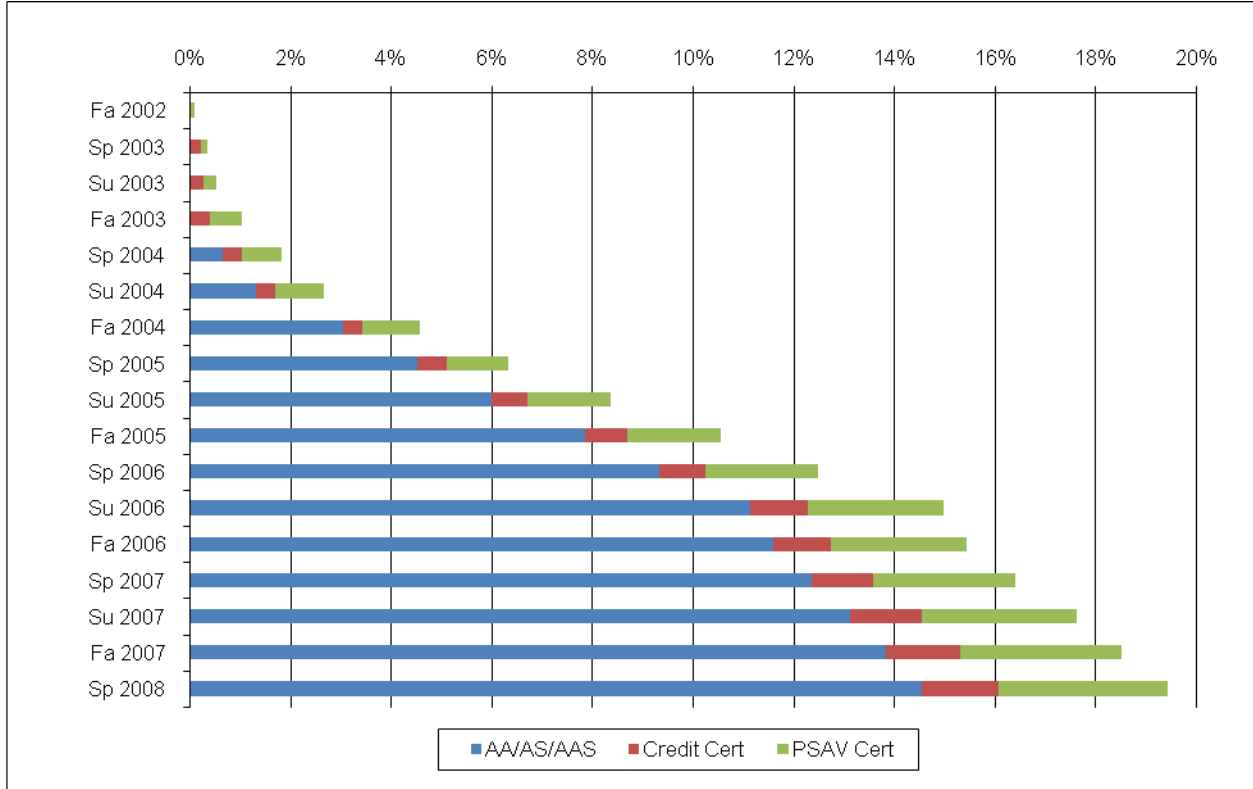


| Term         | Math       |            | Reading   |            | Language  |            | Math/<br>Reading |            | Math/<br>Language |            | Reading/<br>Language |            | All 3     |            | Total      |            | Cumulative<br>Total |            |
|--------------|------------|------------|-----------|------------|-----------|------------|------------------|------------|-------------------|------------|----------------------|------------|-----------|------------|------------|------------|---------------------|------------|
|              | N          | %          | N         | %          | N         | %          | N                | %          | N                 | %          | N                    | %          | N         | %          | N          | %          | N                   | Cum %      |
| Fa 2002      | 1          | 0%         | 0         | 0%         | 0         | 0%         | 0                | 0%         | 0                 | 0%         | 0                    | 0%         | 0         | 0%         | 1          | 0%         | 1                   | 0%         |
| Sp 2003      | 4          | 1%         | 0         | 0%         | 0         | 0%         | 0                | 0%         | 0                 | 0%         | 0                    | 0%         | 0         | 0%         | 4          | 0%         | 5                   | 0%         |
| Su 2003      | 1          | 0%         | 0         | 0%         | 0         | 0%         | 0                | 0%         | 0                 | 0%         | 0                    | 0%         | 2         | 1%         | 3          | 0%         | 8                   | 1%         |
| Fa 2003      | 2          | 0%         | 0         | 0%         | 2         | 1%         | 0                | 0%         | 0                 | 0%         | 3                    | 2%         | 1         | 0%         | 8          | 1%         | 16                  | 1%         |
| Sp 2004      | 2          | 0%         | 5         | 3%         | 1         | 1%         | 0                | 0%         | 0                 | 0%         | 4                    | 2%         | 0         | 0%         | 12         | 1%         | 28                  | 2%         |
| Su 2004      | 3          | 1%         | 1         | 1%         | 4         | 3%         | 1                | 1%         | 1                 | 1%         | 3                    | 2%         | 0         | 0%         | 13         | 1%         | 41                  | 3%         |
| Fa 2004      | 10         | 2%         | 4         | 3%         | 4         | 3%         | 1                | 1%         | 2                 | 1%         | 9                    | 5%         | 0         | 0%         | 30         | 2%         | 71                  | 5%         |
| Sp 2005      | 3          | 1%         | 3         | 2%         | 8         | 5%         | 2                | 2%         | 2                 | 1%         | 8                    | 4%         | 1         | 0%         | 27         | 2%         | 98                  | 6%         |
| Su 2005      | 11         | 2%         | 9         | 6%         | 2         | 1%         | 4                | 3%         | 1                 | 1%         | 4                    | 2%         | 1         | 0%         | 32         | 2%         | 130                 | 8%         |
| Fa 2005      | 12         | 2%         | 2         | 1%         | 6         | 4%         | 0                | 0%         | 4                 | 3%         | 6                    | 3%         | 4         | 1%         | 34         | 2%         | 164                 | 11%        |
| Sp 2006      | 13         | 3%         | 2         | 1%         | 2         | 1%         | 0                | 0%         | 6                 | 4%         | 3                    | 2%         | 3         | 1%         | 29         | 2%         | 193                 | 12%        |
| Su 2006      | 15         | 3%         | 1         | 1%         | 9         | 6%         | 2                | 2%         | 3                 | 2%         | 6                    | 3%         | 3         | 1%         | 39         | 3%         | 232                 | 15%        |
| Fa 2006      | 3          | 1%         | 1         | 1%         | 2         | 1%         | 0                | 0%         | 0                 | 0%         | 0                    | 0%         | 1         | 0%         | 7          | 0%         | 239                 | 15%        |
| Sp 2007      | 6          | 1%         | 3         | 2%         | 1         | 1%         | 1                | 1%         | 1                 | 1%         | 0                    | 0%         | 3         | 1%         | 15         | 1%         | 254                 | 16%        |
| Su 2007      | 9          | 2%         | 0         | 0%         | 3         | 2%         | 2                | 2%         | 0                 | 0%         | 4                    | 2%         | 1         | 0%         | 19         | 1%         | 273                 | 18%        |
| Fa 2007      | 4          | 1%         | 3         | 2%         | 3         | 2%         | 0                | 0%         | 2                 | 1%         | 1                    | 1%         | 1         | 0%         | 14         | 1%         | 287                 | 18%        |
| Sp 2008      | 4          | 1%         | 3         | 2%         | 1         | 1%         | 0                | 0%         | 1                 | 1%         | 1                    | 1%         | 4         | 1%         | 14         | 1%         | 301                 | 19%        |
| Su 2008      | 1          | 0%         | 2         | 1%         | 1         | 1%         | 0                | 0%         | 1                 | 1%         | 2                    | 1%         | 3         | 1%         | 10         | 1%         | 311                 | 20%        |
| <b>Total</b> | <b>104</b> | <b>21%</b> | <b>39</b> | <b>27%</b> | <b>49</b> | <b>32%</b> | <b>13</b>        | <b>10%</b> | <b>24</b>         | <b>15%</b> | <b>54</b>            | <b>30%</b> | <b>28</b> | <b>10%</b> | <b>311</b> | <b>20%</b> | <b>311</b>          | <b>20%</b> |



**Florida Community College at Jacksonville  
COHORT II Tracking Report  
July 2008**

**COHORT II 2002 Fall – Completion Rate, by Degree/Certificate**



| Term         | A.A.S.<br>A.A.S. |            | Credit<br>Certificate |           | PSAV<br>Certificate |           | Total      |            |
|--------------|------------------|------------|-----------------------|-----------|---------------------|-----------|------------|------------|
|              | N                | Cum %      | N                     | Cum %     | N                   | Cum %     | N          | %          |
| Fa 2002      | 0                | 0%         | 0                     | 0%        | 1                   | 0%        | 1          | 0%         |
| Sp 2003      | 0                | 0%         | 3                     | 0%        | 1                   | 0%        | 4          | 0%         |
| Su 2003      | 0                | 0%         | 1                     | 0%        | 2                   | 0%        | 3          | 0%         |
| Fa 2003      | 0                | 0%         | 2                     | 0%        | 6                   | 1%        | 8          | 1%         |
| Sp 2004      | 10               | 1%         | 0                     | 0%        | 2                   | 1%        | 12         | 1%         |
| Su 2004      | 10               | 1%         | 0                     | 0%        | 3                   | 1%        | 13         | 1%         |
| Fa 2004      | 27               | 3%         | 0                     | 0%        | 3                   | 1%        | 30         | 2%         |
| Sp 2005      | 23               | 5%         | 3                     | 1%        | 1                   | 1%        | 27         | 2%         |
| Su 2005      | 23               | 6%         | 2                     | 1%        | 7                   | 2%        | 32         | 2%         |
| Fa 2005      | 29               | 8%         | 2                     | 1%        | 3                   | 2%        | 34         | 2%         |
| Sp 2006      | 23               | 9%         | 1                     | 1%        | 6                   | 2%        | 30         | 2%         |
| Su 2006      | 28               | 11%        | 4                     | 1%        | 7                   | 3%        | 39         | 3%         |
| Fa 2006      | 7                | 12%        | 0                     | 1%        | 0                   | 3%        | 7          | 0%         |
| Sp 2007      | 12               | 12%        | 1                     | 1%        | 2                   | 3%        | 15         | 1%         |
| Su 2007      | 12               | 13%        | 3                     | 1%        | 4                   | 3%        | 19         | 1%         |
| Fa 2007      | 11               | 14%        | 1                     | 1%        | 2                   | 3%        | 14         | 1%         |
| Sp 2008      | 11               | 15%        | 1                     | 2%        | 2                   | 3%        | 14         | 1%         |
| <b>Total</b> | <b>192</b>       | <b>12%</b> | <b>19</b>             | <b>1%</b> | <b>44</b>           | <b>3%</b> | <b>255</b> | <b>16%</b> |